

Conjugated linoleic acid in adipose tissue and risk of myocardial infarction^{1–3}

Liesbeth A Smit, Ana Baylin, and Hannia Campos

ABSTRACT

Background: Despite the high saturated fat content of dairy products, no clear association between dairy product intake and risk of myocardial infarction (MI) has been observed. Dairy products are the main source of conjugated linoleic acid (CLA; 18:2n–7t), which is produced by the ruminal biohydrogenation of grasses eaten by cows. Pasture-grazing dairy cows have more CLA in their milk than do grain-fed cows. Some animal models have reported beneficial effects of CLA on atherosclerosis.

Objective: The objective was to determine the association between the 9c,11t-CLA isomer in adipose tissue and risk of MI.

Design: The studied population consisted of 1813 incident cases of a first nonfatal acute MI and 1813 population-based controls matched for age, sex, and area of residence. All subjects lived in Costa Rica—a country that uses traditional pasture-grazing for dairy cows. Conditional logistic regression was used to estimate multivariate odds ratios and 95% CIs.

Results: Adipose tissue 9c,11t-CLA was associated with a lower risk of MI in basic and multivariate models. Compared with the lowest quintile, odds ratios and 95% CIs were 0.80 (0.61, 1.04) for the second, 0.86 (0.64, 1.14) for the third, 0.62 (0.46, 0.84) for the fourth, and 0.51 (0.36, 0.71) for the fifth quintiles (*P* for trend <0.0001). Dairy intake was not associated with risk of MI, despite a strong risk associated with saturated fat intake.

Conclusion: 9c,11t-CLA, which is present in meaningful amounts in the milk of pasture-grazed cows, might offset the adverse effect of the saturated fat content of dairy products. *Am J Clin Nutr* 2010;92:34–40.

INTRODUCTION

Conjugated linoleic acid (CLA; 18:2n–7t) consists of a group of linoleic acid *trans* isomers that occur naturally in the diet. CLA is produced by biohydrogenation in ruminant animals such as cows, sheep, and goats (1) (**Figure 1**). Thus, CLA in the diet comes from dairy products and ruminant meats (2). Milk with a high content of CLA is produced when cows are fed pasture-based diets, as opposed to conserved forage or grain (3). Fresh grass contains a high concentration of soluble fiber and fermentable sugars, which create a more basic environment in the rumen that is favorable to the growth of the microbes responsible for CLA production (3). Experiments have shown that the CLA content of milk from cows grazing pastures was 5-fold higher than in cows fed conserved forage and grain (4).

As a *trans* fatty acid, CLA might play a role in heart disease. Some (5, 6), but not all (7), animal models suggest that the

common 9c,11t isomer of CLA paradoxically could protect against atherosclerosis and that this protection is possibly mediated by its beneficial effects on lipoprotein metabolism (8). However, in humans, CLA supplements have not consistently affected plasma lipid risk factors (9). The CLA doses used in human intervention studies (range: 0.7–6.8 g/d) and the proportion of 9c,11t to 10t,12c isomers used in the supplements do not reflect natural sources of dietary CLA (9).

To our knowledge, no studies that evaluated the association between CLA from natural food sources at levels currently consumed and heart disease have been published. These studies are of great interest because of the lack of consistency in human studies and animal experiments that evaluate the effects of CLA on risk factors. Epidemiologic studies on the association between CLA intake assessed by questionnaires and heart disease are challenging because CLA and saturated fat share common food sources, mainly dairy products and beef. Therefore, biomarkers of dietary intake of CLA may be more likely to provide an accurate objective measure of long-term intake than are dietary questionnaires (10). Subcutaneous adipose tissue is considered the best choice for studies of long-term intake because of its slow turnover (11, 12).

The objective of this study was to test whether adipose tissue CLA is associated with risk of nonfatal myocardial infarction (MI). We measured 9c,11t-CLA in adipose tissue samples from 3626 individuals in Costa Rica with and without a history of nonfatal MI. In Costa Rica, the dairy industry uses mostly traditional pasture grazing for dairy cattle, and the content of CLA is higher than in milk produced in the United States from corn-fed cattle in feedlots (2, 13). Thus, Costa Rica is an especially favorable setting to study the relation between natural sources of CLA and heart disease.

¹ From the Department of Nutrition, Harvard School of Public Health, Boston, MA (LAS and HC); the Department of Epidemiology, University of Michigan School of Public Health, Ann Arbor, MI (AB); and the Centro Centroamericano de Población, Universidad de Costa Rica, San Pedro, Costa Rica (HC).

² Supported by grants HL49086 and HL60692 from the National Institutes of Health.

³ Address correspondence to H Campos, Department of Nutrition, Room 201, Building 1, Harvard School of Public Health, 665 Huntington Avenue, Boston, MA 02115. E-mail: hcampos@hsph.harvard.edu.

Received March 16, 2010. Accepted for publication April 2, 2010.

First published online May 12, 2010; doi: 10.3945/ajcn.2010.29524.

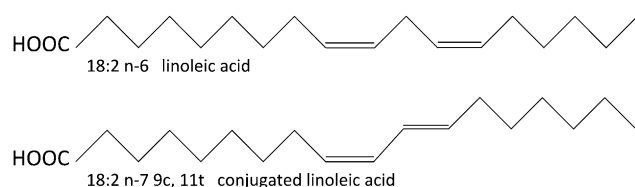


FIGURE 1. Graphic representation of linoleic acid (*cis*) and the 9c,11t isomer of conjugated linoleic acid.

SUBJECTS AND METHODS

Participants were recruited from 34 counties that comprise the Central Valley of Costa Rica. Eligible case subjects were men and women who survived a first acute MI, as diagnosed by 2 independent cardiologists at any of the 6 recruiting hospitals, and who were permanent residents of the geographic area defined for the study. A permanent resident was defined as any subject sharing room and board in the area of residence ≥ 4 days/wk. Cases must have lived in the catchment area for ≥ 1 y. To achieve 100% ascertainment, fieldworkers visited the 6 hospitals daily. Criteria for MI matched those set by the World Health Organization and required typical symptoms plus either elevations in cardiac enzyme concentrations or diagnostic changes in the electrocardiogram. On average, patients remained in the hospital for 15 ± 9 d, and data were collected 26 ± 10 d after the MI. This period allowed enough time to evaluate the hospital records, approve the MI status, and start the selection of matched controls before discharge. Subjects were ineligible if they died after recruitment but before the data collection had been completed, were aged ≥ 75 y on the day of their first MI, or were physically or mentally unable to answer the questionnaire. Enrollment was carried out while cases were in the hospital's step-down unit. Of those originally recruited, 47 subjects died before the data collection was completed; therefore, they were not eligible for the study. Of those that met the eligibility criteria, 98% participated in the study.

Controls were randomly selected for each case and matched for age (± 5 y), sex, and area of residence by using the information available at the National Census and Statistics Bureau of Costa Rica. The specific residence of each eligible subject was located in a Census map by using map segments of 60 households each. The order by which eligible homes were visited was selected by a lottery system. Control subjects were ineligible if they had ever had an acute MI or if they were physically or mentally unable to answer the questionnaire. Because of the comprehensive social services provided in Costa Rica, all persons living in the catchment area had access to medical care without regard to income. Therefore, control subjects came from the source population that gave rise to the cases and were not likely to have cardiovascular disease that was not diagnosed because of poor access to medical care. On average, data were collected 30 ± 10 d after recruitment of the matched case. Of those that met the eligibility criteria, 88% participated in the study. Informed consent was given on documents approved by the Human Subjects Committee of the Harvard School of Public Health and the University of Costa Rica.

All study participants were visited in their homes for data collection. The subjects provided information on dietary intake, physical activity, and socioeconomic, demographic, and health characteristics during an interview (14, 15). The fatty acid

composition of all foods commonly used in Costa Rica, including the content of 9c,11t-CLA, was determined and incorporated into the nutrient calculation for the adipose-diet correlation analyses (13). A subcutaneous adipose tissue biopsy sample was collected from the upper buttock with a 16-gauge needle and disposable syringe and analyzed by gas-liquid chromatography following procedures previously described (16). The between-run CV was 5.2% for 9c,11t-CLA.

All data were analyzed by using Statistical Analysis System software (version 9.1; SAS Institute Inc, Cary, NC). A total of 1813 case-control pairs were included in the analysis. The significance of differences in the distributions of categorical variables by case-control status was tested by using McNemar's test; continuous variables were tested by using the paired *t* test if normally distributed or by the Wilcoxon's signed-rank test if not normally distributed. Odds ratios (ORs) and 95% CIs for risk of MI between quintiles of median adipose tissue 9c,11t-CLA or dairy intake were estimated by using multiple conditional logistic regression models. Tests for trends were performed across quintiles by using the median value for each of the quintiles modeled as a continuous variable. Confounders included in the models were physical activity (quintiles), monthly household income (quintiles), smoking status (never, past, or <10 , 10–20, or >20 cigarettes/d), alcohol intake (4 categories: 0 for non-drinkers <1 g/d and tertiles for those with ≥ 1 g/d), calorie-adjusted saturated fat intake (quintiles), adipose tissue α -linolenic acid (18:3n–3) (quintiles), history of diabetes (yes or no), hypertension (yes or no), history of hypercholesterolemia (yes or no), family history of heart disease (yes or no), and adipose tissue *trans* fatty acids (quintiles). The main sources of saturated fat in the Costa Rican diet are palm oil, beef, and dairy products (17). *trans* Fatty acids in adipose tissue include 16:1, 18:1, and 18:2*t*. Other potential confounders examined but not included in the final models were calcium, vitamin D, fiber, cholesterol, polyunsaturated fatty acid intake, and the adipose tissue fatty acids 18:2n–6, 18:3n–6, 15:0, 17:0, and 20:4n–6. In controls, a multiple linear regression model was used to test the trend for dietary CLA across adipose tissue CLA deciles adjusted for age, sex, and waist-to-hip ratio.

RESULTS

The basic characteristics of the cases and controls are shown in **Table 1**. The distribution of potential confounders by quintiles of adipose tissue 9c,11t-CLA is shown in **Table 2**. Median 9c,11t-CLA values in adipose tissue ranged from 0.35% of fatty acids in the lowest quintile to 0.78% in the highest quintile. The median 9c,11t-CLA intakes corresponding to the first and fifth adipose tissue CLA quintiles were 0.23 and 0.33 g/d, 0.27% and 0.37% of total fat, and 0.08% and 0.12% of energy, respectively. Higher adipose tissue 9c,11t-CLA values were associated with less smoking; lower physical activity, waist-to-hip ratios, and polyunsaturated fat, alcohol, and dietary fiber intakes; and lower amounts of linoleic (18:2n–6) and α -linolenic (18:3n–3) acid in adipose tissue. Higher adipose tissue 9c,11t-CLA values were associated with higher income, higher dairy product and saturated fat intakes, and higher amounts of *trans* fatty acids in adipose tissue.

ORs and 95% CIs for risk of MI across quintiles of 9c,11t-CLA in adipose tissue are shown in **Table 3**. Higher amounts of adipose tissue 9c,11t-CLA were associated with a 43% lower risk

TABLE 1Characteristics of cases of myocardial infarction and population-based controls¹

	Controls (n = 1813)	Cases (n = 1813)	P value ²
Matching variables			
Age (y)	58 ± 11 ³	58 ± 11	1.00
Female sex (%)	27	27	1.00
Area of residence (% rural)	35	35	0.75
General characteristics			
Monthly household income (US\$)	580 ± 425	506 ± 394	0.001
Waist-to-hip ratio	0.95 ± 0.07	0.97 ± 0.07	0.41
Physical activity (METs)	1.55 ± 0.65	1.50 ± 0.67	0.13
Current smokers (%) ⁴	21	40	<0.0001
History of diabetes (%)	15	24	<0.0001
History of hypertension (%)	30	39	0.01
History of hypercholesterolemia (%)	27	30	0.15
Saturated fat (% of energy)	10.4 ± 2.7	11.1 ± 2.9	0.0006
Monounsaturated fat (% of energy)	11.7 ± 3.8	11.9 ± 3.5	0.004
Polyunsaturated fat (% of energy)	6.2 ± 2.0	6.0 ± 2.0	0.49
trans Fat (% of energy) ⁵	3.4 ± 1.9	3.8 ± 2.2	0.85
Cholesterol (mg/1000 kcal)	118 ± 53	126 ± 58	<0.0001
Dietary fiber (g/d) ⁶	24 ± 9	25 ± 9	0.10
Alcohol (% drinkers)	41	37	<0.0001
Dairy products (servings/d) ⁶	2.00 ± 1.55	1.93 ± 1.54	<0.0001
Beef (servings/d) ⁶	0.40 ± 0.39	0.39 ± 0.40	<0.0001

¹ n = 1813. METs, metabolic equivalent tasks.² The significance of differences in the distributions of categorical variables by case-control status was tested by using McNemar's test; continuous variables were tested with paired *t* test if normally distributed or with Wilcoxon's signed-rank test if nonnormally distributed.³ Mean ± SD (all such values).⁴ Smokers of ≥10 cigarettes/d.⁵ Includes 18:1*t*, 18:2*t*, and 16:1*t*(n-7) fatty acids.⁶ Adjusted for total energy by use of the residual method.

of MI in the basic model (OR: 0.57; 95% CI: 0.45, 0.71). Adjustment for physical activity, income, smoking, alcohol intake, adipose tissue, α -linolenic acid, family history of heart disease, and history of hypercholesterolemia, hypertension, and diabetes attenuated the association (OR: 0.64; 95% CI: 0.48, 0.84). Further adjustment for saturated fat intake and *trans* fatty acids in adipose tissue strengthened the association (OR: 0.51; 95% CI: 0.36, 0.71). We also examined the association between dairy intake and risk of MI (Table 4). No association between dairy intake and risk of MI was observed in the basic model that included physical activity, income, smoking, and history of hypertension and diabetes. However, an inverse association between dairy intake and risk of MI was observed after adjustment for saturated fat intake and *trans* fatty acids in adipose tissue. To examine whether this inverse association could be attributed to 9*c*,11*t*-CLA, we further adjusted the model by 9*c*,11*t*-CLA in adipose tissue. The association between dairy product intake and MI was no longer statistically significant after this adjustment. Saturated fat intake was strongly associated with the risk of MI. The ORs (and 95% CIs) for MI were 1.00, 1.11 (0.88, 1.41), 1.17 (0.92, 1.50), 1.43 (1.12, 1.84), and 1.68 (1.29, 2.19) (*P* for trend = 0.0001) in the adjusted model that included the matching factors age, sex, area of residence, physical activity, income, smoking, family history of hypertension and diabetes, and adipose tissue *trans* fatty acids.

We examined whether adipose tissue 9*c*,11*t*-CLA was correlated with its corresponding dietary intake. Median adipose tissue 9*c*,11*t*-CLA as a percentage of total fatty acids and 95%

CI by deciles of dietary 9*c*,11*t*-CLA as a percentage of fatty acids are shown in Figure 2. A significant positive relation was observed between dietary and adipose 9*c*,11*t*-CLA (*r* = 0.24; 95% CI: 0.19, 0.28). We also assessed the correlation between adipose tissue 9*c*,11*t*-CLA and intake of dairy products and beef. Median adipose tissue 9*c*,11*t*-CLA values as a percentage of total fatty acids by deciles of dairy product or beef intake as servings per day are shown in Figure 3. The intake of dairy products was significantly correlated with adipose tissue 9*c*,11*t*-CLA (*r* = 0.31; 95% CI: 0.26, 0.35). In contrast, no correlation was found between beef intake and 9*c*,11*t*-CLA in adipose tissue (*r* = -0.02; 95% CI: -0.07, 0.04).

Compared with dairy product intake, the variation in beef intake was small across adipose 9*c*,11*t*-CLA values. Beef intake ranged between 0 servings/d in the lowest decile to 1.2 servings/d in the highest decile of adipose tissue 9*c*,11*t*-CLA, whereas dairy product intake ranged from 0.2 in the lowest decile to 5.0 servings/d in the highest decile. The corresponding median 9*c*,11*t*-CLA value in adipose tissue was 0.56 for both deciles of beef intake. Thus, adipose tissue 9*c*,11*t*-CLA mostly reflected the intake of dairy products.

DISCUSSION

We examined whether adipose tissue 9*c*,11*t*-CLA, an isomer that represents ≈80% of all CLA isomers in the diet, was associated with higher risk of MI. Our data showed that higher adipose tissue 9*c*,11*t*-CLA was associated with lower risk of MI.

TABLE 2General characteristics and potential confounders by quintile of adipose tissue conjugated linoleic acid (CLA; 9c,11t 18:2n-7) in population-based controls¹

	Quintile of adipose CLA					<i>P</i> for trend ²
	1	2	3	4	5	
Median adipose CLA (% of total fatty acids)	0.35	0.45	0.53	0.62	0.78	
CLA intake						
(g/d)	0.23	0.26	0.29	0.30	0.33	<0.0001
(% of total fat)	0.27	0.30	0.33	0.34	0.37	<0.0001
(% of energy)	0.08	0.10	0.11	0.11	0.12	<0.0001
Waist-to-hip ratio	0.96	0.96	0.95	0.95	0.93	<0.0001
Physical activity (METs)	1.66	1.59	1.58	1.50	1.42	<0.0001
Monthly household income (US\$)	520	608	620	563	583	0.03
Current smokers (%) ³	24	24	17	18	20	0.49
Alcohol (% drinkers)	50	46	40	35	36	0.0006
History of diabetes (%)	17	15	15	15	13	0.007
History of hypertension (%)	29	31	29	29	31	0.28
Daily dietary intake						
Saturated fat (% of energy)	9.9	10.0	10.5	10.7	10.7	<0.0001
Monounsaturated fat (% of energy)	11.5	11.6	11.9	11.6	12.1	0.04
Polyunsaturated fat (% of energy)	6.6	6.5	6.3	6.0	5.9	<0.0001
Cholesterol (mg/1000 kcal)	119	122	117	120	115	0.03
Dietary fiber (g/d)	25.8	24.3	24.0	23.1	23.2	<0.0001
Dairy products (servings/d) ⁴	1.3	1.7	2.0	2.2	2.8	<0.0001
Beef (servings/d) ⁴	0.38	0.39	0.41	0.43	0.39	0.77
Adipose tissue (% of total fatty acids)						
Linoleic acid, 18:2n-6	16.5	16.1	16.0	15.1	14.4	<0.0001
α -Linolenic acid, 18:3n-3	0.70	0.67	0.67	0.63	0.61	<0.0001
<i>trans</i> Fatty acids						
Palmitelaidic acid, 16:1n-7t	0.13	0.15	0.15	0.15	0.15	0.0001
18:1t ⁵	1.28	1.29	1.44	1.52	1.72	<0.0001
18:2t ⁶	0.98	1.04	1.11	1.18	1.34	<0.0001

¹ All values are medians. *n* = 1813. METs, metabolic equivalent tasks.² General linear regression models were used for tests for trends across quintiles by using the median value for each of the quintiles modeled as a continuous variable.³ Smokers of ≥ 10 cigarettes/d.⁴ Adjusted for total energy by use of the residual method.⁵ Sum of 18:1n-7t (vaccenic acid), 18:1n-9t (elaidic acid), and 18:1n-12t (petroselaidic acid).⁶ Sum of 18:2n-6tt (linoelaidic acid), 18:2n-6ct, and 18:2n-6tc.

Intake of dairy products was not associated with risk of MI. Subjects with higher adipose tissue 9c,11t-CLA values had higher 9c,11t-CLA intakes and higher intakes of dairy products.

The results from this study appear counterintuitive because dairy fat also contains relatively high proportions of saturated fat

with well-established pro-atherogenic characteristics. However, consistent with our study, most epidemiologic studies show that the intake of dairy products, per se, is either not associated with a higher risk of heart disease or is associated with a lower risk of heart disease (18). In a study in Greece, a one-portion increase in

TABLE 3Odds ratios and 95% CIs for risk of myocardial infarction by quintile of adipose tissue conjugated linoleic acid (CLA; 9c,11t 18:2n-7)¹

	Quintile of adipose CLA					<i>P</i> for trend
	1	2	3	4	5	
Median adipose tissue CLA (% of total fatty acids)	0.35	0.45	0.53	0.62	0.78	
Model 1 ²	1.00 (ref)	0.78 (0.64, 0.96)	0.75 (0.60, 0.93)	0.65 (0.52, 0.81)	0.57 (0.45, 0.71)	<0.0001
Model 2 ³	1.00 (ref)	0.84 (0.66, 1.08)	0.94 (0.72, 1.22)	0.73 (0.56, 0.95)	0.66 (0.51, 0.88)	0.002
Model 3 ⁴	1.00 (ref)	0.85 (0.66, 1.09)	0.93 (0.71, 1.22)	0.72 (0.55, 0.94)	0.64 (0.48, 0.84)	0.0007
Model 4 ⁵	1.00 (ref)	0.80 (0.61, 1.04)	0.86 (0.64, 1.14)	0.62 (0.46, 0.84)	0.51 (0.36, 0.71)	<0.0001

¹ *n* = 3626. Values were estimated by using multiple conditional logistic regression models. ref, reference.² Adjusted for matching factors age, sex, and area of residence.³ Adjusted as for model 1 plus physical activity, income, smoking, waist-to-hip ratio, family history of myocardial infarction, and history of hypertension, hypercholesterolemia, and diabetes.⁴ Adjusted as for model 2 plus alcohol intake and adipose tissue α -linolenic acid.⁵ Adjusted as for model 3 plus saturated fat intake and *trans* fatty acids in adipose tissue.

TABLE 4Odds ratios and 95% CIs for risk of myocardial infarction by quintile of servings of dairy products¹

	Quintile of dairy and saturated fat consumption					<i>P</i> for trend
	1	2	3	4	5	
Median dairy product intake (servings/d)	0.43	1.10	1.70	2.56	4.21	
Model 1 ²	1.00 (ref)	0.88 (0.71, 1.11)	1.14 (0.91, 1.44)	0.96 (0.77, 1.22)	0.93 (0.74, 1.17)	0.61
Model 2 ³	1.00 (ref)	0.85 (0.67, 1.07)	1.07 (0.85, 1.36)	0.84 (0.66, 1.07)	0.75 (0.58, 0.98)	0.03
Model 3 ⁴	1.00 (ref)	0.86 (0.67, 1.09)	1.14 (0.89, 1.46)	0.92 (0.72, 1.19)	0.85 (0.65, 1.12)	0.28

¹ *n* = 3626. Values were estimated by using multiple conditional logistic regression models. ref, reference.² Adjusted for matching factors age, sex, area of residence, physical activity, income, smoking, and family history of hypertension and diabetes.³ Adjusted as for model 1 plus saturated fat intake and adipose tissue *trans* fatty acids (excluding conjugated linoleic acid).⁴ Adjusted as for model 2 plus adipose tissue 9*c*,11*t* conjugated linoleic acid.

dairy product consumption was associated with 12% lower risk of MI (19). Studies conducted using biomarkers of dairy intake have yielded conflicting results. In Norway, a higher content of 15:0 in adipose tissue was associated with a lower risk of MI (20). In contrast, a higher content of 15:0 in plasma was associated with a higher risk of MI in the United States (21). Our findings on 9*c*,11*t*-CLA suggest that these conflicting results could be attributed to differences in the proportion of 9*c*,11*t*-CLA in dairy products in the different countries where the studies were conducted. The proportion of 9*c*,11*t*-CLA in milk, in European countries where cows are traditionally pasture grazed (22), is likely to be higher than in countries where cows are mainly corn fed, such as the United States (4). Thus, the potential adverse effects of saturated fat in dairy products on risk of MI may be counterbalanced by the potential beneficial effects of 9*c*,11*t*-CLA. Our findings support this hypothesis. Intake of dairy products was not associated with risk of MI in the basic model, but an inverse association was observed after adjustment for saturated fat and *trans* fatty acids, both of which are highly associated with risk of MI. This inverse trend was attenuated after adjustment for 9*c*,11*t*-CLA, which suggests that this fatty acid accounted for the inverse association observed.

Large between-country differences exist in the consumption of dairy products worldwide, with some countries consuming as low as 27 g/d (23). The intake of dairy products in this study (238 g/d) was somewhat lower than that reported for adults in the United States (247 g/d) (24). However, the reported average 9*c*,11*t*-CLA intake in Costa Rica (0.29 g/d) was higher than estimated intakes in a study conducted in the United States (0.11 g/d) (25) but similar to adipose tissue values observed in Sweden (26). These differences could be explained by a higher content of 9*c*,11*t*-CLA in Costa Rica. For example, the content of CLA measured in milk fat in Costa Rica is higher (15.8 mg CLA/g fat) (13) than the contents reported for the United States (4.5 mg CLA/g fat) (2).

A positive relation was found between dietary and adipose tissue 9*c*,11*t*-CLA. Consistent with the findings of a previous study (26), adipose tissue 9*c*,11*t*-CLA was positively associated with dairy product intake. In contrast, no relation was found between adipose tissue 9*c*,11*t*-CLA and beef intake. This observation could be explained by the small range of beef intake (0 serving/d in the lowest decile to 1.2 servings/d in the highest decile) compared with dairy product intake (0.2 serving/d in the lowest to 5.0 servings/d in the highest decile). Also, 9*c*,11*t*-CLA from dairy products contributed 59% of total dietary CLA, whereas beef contributed 19%. These findings suggest that 9*c*,11*t*-CLA from dairy products played a role in the inverse association between adipose tissue 9*c*,11*t*-CLA and risk of MI.

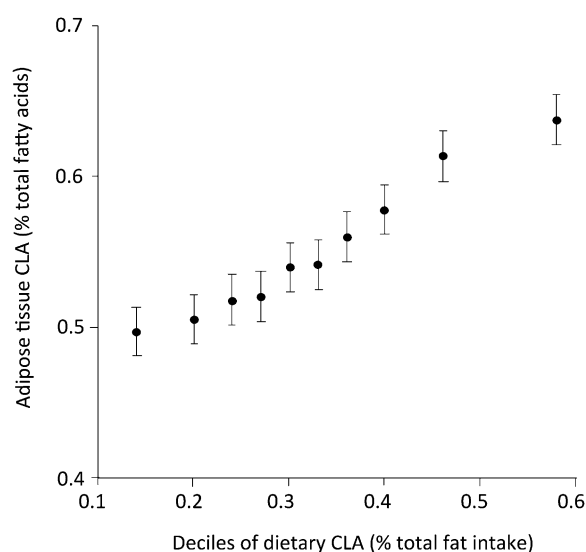


FIGURE 2. Median values and 95% CIs for adipose tissue 9*c*,11*t*-conjugated linoleic acid (CLA) by deciles of dietary 9*c*,11*t*-CLA. Values are adjusted for age, sex, and waist-to-hip ratio. *P* for trend = 0.0001. *n* = 1813.

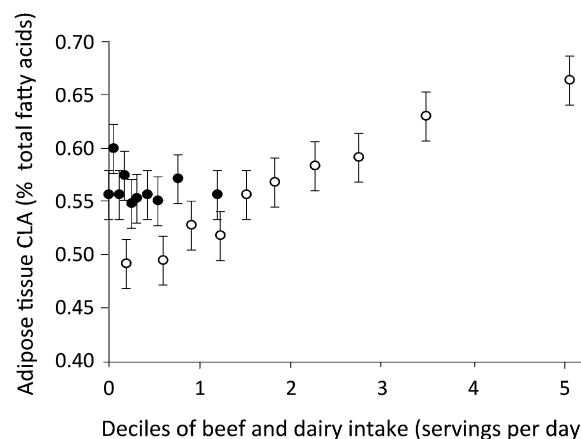


FIGURE 3. Median values and 95% CIs for adipose tissue 9*c*,11*t*-conjugated linoleic acid (CLA) by deciles of beef (●) or dairy (○) intake. Values are adjusted for age, sex, and waist-to-hip ratio. *P* for trend = 0.13 for beef, and *P* = 0.0001 for dairy intake. *n* = 1813.

Several mechanisms can be proposed to explain our findings, but the results from animal models and intervention trials are far from clear. Experimental research in animal models has found that CLA can protect against atherosclerosis and that this effect could be mediated by its effect on plasma lipids (5, 6, 8). These findings have not been consistent because null and positive effects have been also detected (7). CLA intake causes weight reduction in animal models (27)—an effect that has been attributed to an increase in energy expenditure and energy lost in excreta (28). In support of this hypothesis, we found an inverse association between adipose tissue 9c,11t-CLA and the waist-to-hip ratio, but this trend was not significant after adjustment for confounders. Studies of the effects of CLA on weight reduction in humans are ambiguous (9, 29), and the unadjusted associations in this study are relatively small. It is also possible that CLA could have beneficial antiinflammatory effects. Feeding obese mice a 9c,11t-CLA-enriched diet reduced macrophage infiltration in adipose tissue and down-regulated several inflammatory markers, including tumor necrosis factor- α , and nuclear transcription factor κ B expression, DNA binding, and transcriptional activity (30). Other studies have shown peroxisome proliferator-activated receptor- α activation by CLA (31). Thus, human research studies of the pathways by which 9c,11t-CLA at doses commonly found in the diet could affect heart disease in humans are needed.

The main limitation of this study was the use of a retrospective case-control design in which causal effects cannot be studied. Residual confounding by other factors was also a possibility. For example, confounding by other nutrients in dairy products, such as calcium, potassium, and vitamins D and B, were evaluated but not included in the final models because they did not modify the results. These nutrients have been shown to be associated with beneficial outcomes (32–35), but they were measured with a food-frequency questionnaire that has more measurement error than CLA in adipose. Also, the observed results may not be totally determined by dietary CLA, because adipose tissue fatty acids also reflect metabolism. For example, *trans*-vaccenic acid can be converted to CLA in humans (36). The lack of a clear mechanism that can explain these results is also a concern and deserves further research.

The CLA content of milk and of other dairy products ranges from 0.34% to 1.07% of total fat and is influenced by the diet of cows (3). Range-fed animals or those grazing solely on pastures have a higher content of CLA in their milk than do those raised on grains and forage (4). However, it is uncertain at this point whether an increase in CLA in dairy products will have beneficial effects that would counterbalance the adverse effects of saturated fat. Some studies have also found adverse effects of specific CLA isomers when very high doses and different isomer combinations are used (9). Thus, promotion of products containing CLA as beneficial is misguided at this point.

In conclusion, this study showed that higher adipose tissue 9c,11t-CLA is associated with a reduced risk of nonfatal acute MI in Costa Rica. Dairy product intake was not associated with risk of MI. It is possible that the potentially beneficial effect of CLA on MI offsets the adverse effects of saturated fat. The higher proportion of 9c,11t-CLA among traditional pasture grazing dairy cows could improve the adverse effects of saturated fat in dairy products.

The authors' responsibilities were as follows—LAS: drafted the manuscript; HC: conceptualized and designed the study, acquired the data, and obtained funding; and LAS, AB, and HC: conducted the statistical analyses, interpreted the results, provided critical revision of the manuscript for important intellectual content, approved the submitted manuscript, participated sufficiently in the work to take public responsibility for the entire manuscript, had full access to all of the data in the study, and took responsibility for the integrity of the data and the accuracy of the data analysis. None of the authors reported conflicts of interest.

REFERENCES

1. Kepler CR, Hirons KP, McNeill JJ, Tove SB. Intermediates and products of the biohydrogenation of linoleic acid by *Butyrivibrio fibrisolvens*. *J Biol Chem* 1966;241:1350–4.
2. Chin SF, Liu W, Storkson JM, Ha YL, Pariza MW. Dietary sources of conjugated dienoic isomers of linoleic acid, a newly recognized class of anticarcinogens. *J Food Comp Anal* 1992;5:185–97.
3. Dhiman TR, Nam SH, Ure AL. Factors affecting conjugated linoleic acid content in milk and meat. *Crit Rev Food Sci Nutr* 2005;45:463–82.
4. Dhiman TR, Anand GR, Satter LD, Pariza MW. Conjugated linoleic acid content of milk from cows fed different diets. *J Dairy Sci* 1999;82:2146–56.
5. Kritchevsky D, Tepper SA, Wright S, Czarnecki SK, Wilson TA, Nicolosi RJ. Conjugated linoleic acid isomer effects in atherosclerosis: growth and regression of lesions. *Lipids* 2004;39:611–6.
6. Toomey S, Harhen B, Roche HM, Fitzgerald D, Belton O. Profound resolution of early atherosclerosis with conjugated linoleic acid. *Atherosclerosis* 2006;187:40–9.
7. Mitchell PL, McLeod RS. Conjugated linoleic acid and atherosclerosis: studies in animal models. *Biochem Cell Biol* 2008;86:293–301.
8. McLeod RS, LeBlanc AM, Langille MA, Mitchell PL, Currie DL. Conjugated linoleic acids, atherosclerosis, and hepatic very-low-density lipoprotein metabolism. *Am J Clin Nutr* 2004;79:1169S–74S.
9. Salas-Salvado J, Marquez-Sandoval F, Bullo M. Conjugated linoleic acid intake in humans: a systematic review focusing on its effect on body composition, glucose, and lipid metabolism. *Crit Rev Food Sci Nutr* 2006;46:479–88.
10. Sun Q, Ma J, Campos H, et al. A prospective study of trans fatty acids in erythrocytes and risk of coronary heart disease. *Circulation* 2007;115:1858–65.
11. Dayton S, Hashimoto S, Dixon W, Pearce ML. Composition of lipids in human serum and adipose tissue during prolonged feeding of a diet high in unsaturated fat. *J Lipid Res* 1966;7:103–11.
12. Baylin A, Campos H. The use of fatty acid biomarkers to reflect dietary intake. *Curr Opin Lipidol* 2006;17:22–7.
13. Baylin A, Siles X, Donovan-Palmer A, Fernandez X, Campos H. Fatty acid composition of Costa Rican foods including trans fatty acid content. *J Food Comp Anal* 2007;20:182–92.
14. Kabagambe EK, Baylin A, Ascherio A, Campos H. The type of oil used for cooking is associated with the risk of nonfatal acute myocardial infarction in Costa Rica. *J Nutr* 2005;135:2674–9.
15. Kabagambe EK, Baylin A, Allan DA, Siles X, Spiegelman D, Campos H. Application of the method of triads to evaluate the performance of food frequency questionnaires and biomarkers as indicators of long-term dietary intake. *Am J Epidemiol* 2001;154:1126–35.
16. Baylin A, Kabagambe EK, Siles X, Campos H. Adipose tissue biomarkers of fatty acid intake. *Am J Clin Nutr* 2002;76:750–7.
17. Kabagambe EK, Baylin A, Siles X, Campos H. Individual saturated fatty acids and nonfatal acute myocardial infarction in Costa Rica. *Eur J Clin Nutr* 2003;57:1447–57.
18. Tholstrup T. Dairy products and cardiovascular disease. *Curr Opin Lipidol* 2006;17:1–10.
19. Kontogianni MD, Panagiotakos DB, Chrysoshoou C, Pitsavos C, Stefanadis C. Modelling dairy intake on the development of acute coronary syndromes: the CARDIO2000 study. *Eur J Cardiovasc Prev Rehabil* 2006;13:791–7.
20. Biong AS, Veierod MB, Ringstad J, Thelle DS, Pedersen JI. Intake of milk fat, reflected in adipose tissue fatty acids and risk of myocardial infarction: a case-control study. *Eur J Clin Nutr* 2006;60:236–44.
21. Sun Q, Ma J, Campos H, Hu FB. Plasma and erythrocyte biomarkers of dairy fat intake and risk of ischemic heart disease. *Am J Clin Nutr* 2007;86:929–37.

22. Van den Pol-van DA, Vellinga TV, Johansen A, Kennedy E. To graze or not to graze, that's the question. In: Hopkins A, Gustafsson T, Bertilsson J, Dalin G, Nilsdotter-Linde N, Sporndly E, eds. Biodiversity and animal feed. Future challenges for grassland production. Uppsala, Sweden: Organising Committee of the 22nd General Meeting of the European Grassland Federation. Swedish University of Agricultural Sciences (SLU), 2008:706–16.
23. Wang Y, Li S. Worldwide trends in dairy production and consumption and calcium intake: is promoting consumption of dairy products a sustainable solution for inadequate calcium intake? *Food Nutr Bull* 2008; 29:172–85.
24. Beydoun MA, Gary TL, Caballero BH, Lawrence RS, Cheskin LJ, Wang Y. Ethnic differences in dairy and related nutrient consumption among US adults and their association with obesity, central obesity, and the metabolic syndrome. *Am J Clin Nutr* 2008;87:1914–25.
25. Ritzenthaler KL, McGuire MK, Falen R, Shultz TD, Dasgupta N, McGuire MA. Estimation of conjugated linoleic acid intake by written dietary assessment methodologies underestimates actual intake evaluated by food duplicate methodology. *J Nutr* 2001;131:1548–54.
26. Jiang J, Wolk A, Vessby B. Relation between the intake of milk fat and the occurrence of conjugated linoleic acid in human adipose tissue. *Am J Clin Nutr* 1999;70:21–7.
27. Park Y, Albright KJ, Liu W, Storkson JM, Cook ME, Pariza MW. Effect of conjugated linoleic acid on body composition in mice. *Lipids* 1997; 32:853–8.
28. Terpstra AHM, Beynen AC, Everts H, Kocsis S, Katan MB, Zock PL. The decrease in body fat in mice fed conjugated linoleic acid is due to increases in energy expenditure and energy loss in the excreta. *J Nutr* 2002;132:940–5.
29. Plourde M, Jew S, Cunnane SC, Jones PJ. Conjugated linoleic acids: why the discrepancy between animal and human studies? *Nutr Rev* 2008;66:415–21.
30. Moloney F, Toomey S, Noone E, et al. Antidiabetic effects of cis-9, trans-11-conjugated linoleic acid may be mediated via anti-inflammatory effects in white adipose tissue. *Diabetes* 2007;56:574–82.
31. Moya-Camarena SY, Vanden Heuvel JP, Blanchard SG, Leesnitzer LA, Belury MA. Conjugated linoleic acid is a potent naturally occurring ligand and activator of PPARalpha. *J Lipid Res* 1999;40:1426–33.
32. Forman JP, Giovannucci E, Holmes MD, et al. Plasma 25-hydroxyvitamin D levels and risk of incident hypertension. *Hypertension* 2007;49:1063–9.
33. Pilz S, Tomaschitz A, Ritz E, Pieber TR. Vitamin D status and arterial hypertension: a systematic review. *Nat Rev Cardiol* 2009;6:621–30.
34. Page JH, Ma J, Chiuve SE, et al. Plasma vitamin B(6) and risk of myocardial infarction in women. *Circulation* 2009;120:649–55.
35. Houston MC, Harper KJ. Potassium, magnesium, and calcium: their role in both the cause and treatment of hypertension. *J Clin Hypertens (Greenwich)* 2008;10:3–11.
36. Turpeinen AM, Mutanen M, Aro A, et al. Bioconversion of vaccenic acid to conjugated linoleic acid in humans. *Am J Clin Nutr* 2002;76: 504–10.

