

Accepted Manuscript

Obesity associated with increased brain-age from mid-life

Lisa Ronan, Aaron F. Alexander-Bloch, Konrad Wagstyl, Sadaf Farooqi, Carol Brayne, Lorraine K. Tyler, Paul C. Fletcher



PII: S0197-4580(16)30140-3

DOI: [10.1016/j.neurobiolaging.2016.07.010](https://doi.org/10.1016/j.neurobiolaging.2016.07.010)

Reference: NBA 9659

To appear in: *Neurobiology of Aging*

Received Date: 15 October 2015

Revised Date: 14 July 2016

Accepted Date: 15 July 2016

Please cite this article as: Ronan, L., Alexander-Bloch, A.F, Wagstyl, K., Farooqi, S., Brayne, C., Tyler, L.K, Cam-CAN, Fletcher, P.C, Obesity associated with increased brain-age from mid-life, *Neurobiology of Aging* (2016), doi: [10.1016/j.neurobiolaging.2016.07.010](https://doi.org/10.1016/j.neurobiolaging.2016.07.010).

This is a PDF file of an unedited manuscript that has been accepted for publication. As a service to our customers we are providing this early version of the manuscript. The manuscript will undergo copyediting, typesetting, and review of the resulting proof before it is published in its final form. Please note that during the production process errors may be discovered which could affect the content, and all legal disclaimers that apply to the journal pertain.

Obesity associated with increased brain-age from mid-life**Lisa Ronan^a, Aaron F Alexander-Bloch^b, Konrad Wagstyl^a, Sadaf Farooqi^c, Carol Brayne^d, Lorraine K Tyler^e, Cam-CAN^e, Paul C Fletcher^a**^a Brain Mapping Unit, Department of Psychiatry, University of Cambridge, UK^b Yale School of Medicine, Yale University, USA.^c Institute of Metabolic Sciences, Department of Clinical Biochemistry, Cambridge, UK^d Institute of Public Health, University of Cambridge, Cambridge, UK^e Cambridge Center for Ageing and Neuroscience (Cam-CAN) and MRC Cognition and Brain Sciences Unit, Cambridge, UK*Corresponding Author*

Dr Lisa Ronan, lr344@cam.ac.uk

Telephone: 01223 764421

Fax: 01223 764760

*Postal Addresses*Dr Lisa Ronan, Mr Konrad Wagstyl¹ & Professor PC Fletcher²

Brain Mapping Unit

Department of Psychiatry, Downing Site,

Downing Street,

Cambridge CB2 3EB

United Kingdom

¹kw350@cam.ac.uk²pcf22@cam.ac.uk

Dr Aaron Alexander-Bloch

Yale School of Medicine, Department of Psychiatry

300 George St, Suite 901

New Haven, CT 06511

USA

aalexanderbloch@gmail.com

Professor Sadaf Farooqi

University of Cambridge Metabolic Research Laboratories □

Level 4, Wellcome Trust-MRC Institute of Metabolic Science □

Box 289, Addenbrooke's Hospital □

Cambridge □ CB2 0QQ □

United Kingdom

isf20@medschl.cam.ac.uk

Professor Carol Brayne

Cambridge Institute of Public Health

University of Cambridge School of Clinical Medicine

Forvie Site

Cambridge Biomedical Campus

Cambridge CB2 0SR

United Kingdom

cb105@medschl.cam.ac.uk

Professor Lorraine K Tyler

Centre for Speech, Language and the Brain

Department of Psychology

University of Cambridge

Downing Street

Cambridge CB2 3EB

United Kingdom

lkyler@csl.psychol.cam.ac.uk

Abstract

Common mechanisms in aging and obesity are hypothesized to increase susceptibility to neurodegeneration, however direct evidence in support of this hypothesis is lacking. We therefore performed a cross-sectional analysis of MRI-based brain structure on a population-based cohort of healthy adults. Study participants were originally part of the Cambridge Centre for Ageing and Neuroscience (Cam-CAN) and included 527 individuals aged 20 – 87 years. Cortical reconstruction techniques were used to generate measures of whole brain cerebral white matter volume, cortical thickness and surface area. Results indicated that cerebral white matter volume in overweight and obese individuals was associated with a greater degree of atrophy, with maximal effects in middle-age corresponding to an estimated increase of brain-age of 10 years. There were no similar BMI-related changes in cortical parameters. This study suggests that at a population level, obesity may increase the risk of neurodegeneration.

Keywords

obesity; white matter volume; structural MRI; population-based

1. Introduction

The link between obesity and adverse health outcomes such as diabetes, cancer and cardiovascular disease is well-established and poses a major challenge to current and future health care provision. Moreover, it is increasingly recognized that obesity may act to accelerate or advance the onset of age-related changes such as neurodegeneration, either directly or through associated co-morbidities (Doherty 2011). These associations, taken together with the increased rate of obesity in elderly populations (Flegal et al. 2012) render it critical to understand the full impact of obesity on brain health, in particular as evidence suggests that adverse outcomes may be mitigated through intervention (Gunstad et al. 2011).

A number of strands of evidence have related biological processes associated with obesity to changes found in normal aging. For example, as with normal aging, obesity increases oxidative stress (Furukawa et al. 2004), and promotes inflammation through the production of pro-inflammatory cytokines produced in adipose tissue (Arnoldussen et al. 2014; Chung et al. 2009). In turn, cytokines and pro-inflammatory markers such as IL-6 and TNF-alpha have been linked to cognitive decline (Chung et al. 2009; Griffin 2006; Wilson et al. 2002), and have been shown to be up-regulated in regions undergoing neurodegeneration (Wilson et al. 2002). Inflammatory biomarkers have been associated with increased brain atrophy – a common marker of aging (Jefferson et al. 2007), as have other endophenotypes such as shortened telomere length (Wikgren et al. 2014). Conversely, a considerable body of evidence exists suggesting that caloric restriction may be neuroprotective, leading to a delay or slowing of aging (Colman et al. 2009, 2014; Masoro 2005; Sohal and Weindruch 1996), a reduction in age-related apoptosis (Someya et al. 2007), and age-related production of pro-inflammatory cytokines (Kalani et al. 2006; Spaulding et al. 1997).

In short, the growing body of literature that relates common markers of aging to those observed in obesity supports the hypothesis that obesity may accelerate or advance the onset of brain aging. However direct studies in support of this link are lacking. For example, while many studies have reported a link between increased BMI and declining cognitive function (Cournot et al. 2006; Debette et al. 2011), as well as increased risk of dementia and Alzheimer's Disease (Gustafson et al. 2004; Whitmer et al. 2005; Xu et al. 2011), other studies contradict these findings (Qizilbash et al. 2015), and indeed it has even been suggested that lower, rather than higher, body mass may be predictive of the onset of AD in the years immediately preceding the onset of clinical symptoms (Fielding et al. 2013; Knopman et al., 2007). The literature on brain structural changes too is complex. While many studies report a negative correlation between BMI and grey matter volume (increased BMI linked to lower GMV) (Brooks et al. 2013; Debette et al. 2014; Gunstad et al. 2008; Hassenstab et al. 2012; Veit et al.

2014), other reports are contradictory (Haltia *et al.* 2007; Pannacciulli *et al.* 2007; Sharkey *et al.* 2015). More significantly, despite a considerable number of often highly powered studies across the adult lifespan (Taki *et al.* 2008), there is a conspicuous lack of either global findings related to obesity, or evidence of an aging interaction (for a review, see Willette and Kapogiannis 2015).

Thus while current neuroimaging evidence certainly suggests altered brain structure is association with obesity, it fails to support the hypothesis that obesity influences age-related atrophy of the brain. There are a number for reasons for why this might be. Different tissue types in the brain age at different rates (Walhovd *et al.* 2005), perhaps limiting the sensitivity of cross-sectional studies over limited age-periods. Moreover there is a complex and somewhat compensatory interaction between the change in cortical thickness and surface area (Storsve *et al.* 2014), that may confound analysis by morphometric methods such as voxel-based morphometry (VBM) commonly employed in structural studies of obesity. In addition, VBM methods are designed to obviate global changes in favour of regional analyses. If obesity, like aging affects the brain globally, it may be the case that a significant global interaction may be obfuscated. Analysis of white matter too may be confounded. While some studies suggest obesity and inflammation are both associated with smaller fractional anisotropy (FA) in diffusion tensor imaging (DTI) (Stanek *et al.* 2011; Verstynen *et al.* 2013), it is also the case that additional factors related to obesity and aging such as blood pressure are positively associated with FA (Verstynen *et al.* 2013), raising the possibility that competing effects may hamper identification of an age-by-BMI interaction. The alternative to these propositions is that obesity may increase the rate of aging of brain tissue, but that these effects are subtle and within the scope of normal aging parameters.

In this cross-sectional population-based study, we assessed the impact of obesity on brain structure across the adult lifespan using global parameters of volume, cortical thickness and surface area. The goal of our study was to establish the overall effect of obesity on grey (i.e. cortical thickness, surface area) and white matter, to determine whether obesity affected tissue types differentially, and crucially to investigate whether obesity was associated with an increase in brain-age, evaluated with reference to lean controls. We were particularly interested in whether changes associated with obesity (i.e. deviations from lean age-matched controls) might occur during a particular vulnerable period.

2. Materials and Methods

2.1 Subjects

527 subjects with an age range of 20 – 87 years were included in this study. Participants were cognitively healthy adults recruited from the local community over a period of 5 years as part of an ongoing project to investigate the effects of aging on memory and cognition at the Cambridge Centre for Aging and Neuroscience (Shafto *et al.* 2014). Ethical approval for the Cam-CAN study was obtained from the Cambridgeshire 2 (now East of England - Cambridge Central) Research Ethics Committee. Of these, 54 subjects were excluded on the basis of being underweight ($\text{BMI} < 18.5\text{kgm}^{-2}$), under the age of 20, or for reasons of poor MR image quality (see below). Subject demographics are detailed in Table 1. The mean age was 54 years (range 20 – 87), and mean BMI 26kg/m^2 (18.5 – 45.5). The final cohort included 246 (51%) lean controls (BMI between 18.5 - 25kgm^{-2}), 150 overweight subjects (31%) (BMI 25 – 30kgm^{-2}), and 77 obese subjects (BMI $>30\text{kgm}^{-2}$). There was a significant positive correlation between age and BMI ($r = 0.24$, $p < 0.001$). Various health and lifestyle factors were recorded including self-reported history of diagnosis of diabetes, stroke, cancer, myocardial infarction, high blood pressure and high cholesterol. A self-report questionnaire was used to calculate total estimated physical activity per week (measures as kJ/day/Kg). Education level was binarised to those with or without degree-level qualifications. Gross household income was also included, defined as those above and below a threshold income of £30,000. There were no incidences of Parkinson's Disease or Multiple Sclerosis. Cognitive performance was quantified using Cattell Culture Fair (scale 2, form A) (Shafto *et al.* 2014).

----- TABLE 1 HERE -----

2.2 MR Acquisition and Image Analysis

2.2.1 MR Acquisition

Structural images were acquired on a 3T Siemens TIM Trio system employing a 32 channel head coil. A high resolution 3D T1-weighted structural image were acquired using a Magnetization Prepared Rapid Gradient Echo (MPRAGE) sequence with the following parameters: Repetition Time (TR) =2250 milliseconds; Echo Time (TE) =2.99 milliseconds; Inversion Time (TI) =900 milliseconds; flip angle =9 degrees; field of view (FOV) = 256mm x 240mm x 192mm; voxel size =1mm isotropic; GRAPPA acceleration factor =2; acquisition time of 4 minutes and 32 seconds.

2.2.2 Cortical Reconstruction and Structural Measures

Cortical reconstructions were generated using the software *FreeSurfer* (Dale et al. 1999; Fischl et al. 1999; Fischl and Dale 2000). The *FreeSurfer* program was specifically developed for cortical reconstruction and has been extensively validated (Kuperberg et al. 2003; Han et al. 2006; Rosas et al. 2002). Measures of cerebral white matter volume and intra-cranial volume were generated. We further quantified whole brain cerebral surface area which was based on the pial surface, and whole brain cortical thickness, which was taken as the mean thickness across each hemisphere, where thickness was first estimated at each vertex in the reconstruction measured as the minimum distance between the grey-white and pial surfaces. Surface reconstruction processes were conducted in native space. Examples of grey / white matter segmentation for representative age-matched lean and obese subjects are included in Figure 1. All reconstructions were quality controlled (see below).

2.2.3 Quality Assurance

All reconstructions were qualitatively assessed by a single rater (LR) and categorised as "good" (n = 411, 81%), "adequate" (n = 62, 12%) or "poor" (n = 33, 7%). There was a statistically significant interaction between age and quality of surface reconstruction ($z = -8.6$, $p < 0.001$), with older subjects more likely to have poor reconstruction quality.

Because manual edits of the entire dataset was unfeasible, we decided to test the effect of edits on a sub-sample of the data. For this manual edits were done on 100 brains chosen at random, and the cortical reconstructions re-computed. New values of cortical surface area, thickness and white matter volume were these generated and contrasted to the original, unedited values. Bland and Altman plots (Supplementary Figure A) and linear regression were used to assess the variability and bias of values pre- and post- editing (Bland and Altman 1986). Results suggest that for reconstructions deemed "good" and "adequate", editing did not statistically significantly affect morphometric values (white matter volume $F = 2.9$, $p = 0.09$; surface area $F = 1.7$, $p = 0.2$; thickness $F = 0.7$, $p = 0.4$). The mean difference between pre- and post edits for each measure was zero indicating no bias between measurements. On this basis we excluded all reconstructions deemed "poor" (n=33).

2.2.4 Regional analysis of thickness and surface area

Cortical thickness was further explored at a regional level using *FreeSurfer*. Each individual cortical reconstruction was aligned to a template using a hierarchical spherical averaging method (Fischl et al. 1999). Thereafter, group (lean vs. overweight / obese) – by – age interactions were explored using a general linear model with total intra-cranial volume and grey / white matter contrast (see section Statistical Analysis below) as covariates. Monte Carlo correction (10,000 iterations, $p < 0.01$) was used to account for multiple comparisons at the cluster-level.

2.3 Statistical Analysis

Previous studies have demonstrated while the cortex ages linearly, white matter volume has a non-linear aging trajectory. For this reason we used penalized spline mixed-effect models to describe the

age-dependent variation in each measure. Details of these methods have been described elsewhere (Alexander-Bloch *et al.* 2014; Wood and Scheipl 2015). Data were Box-Cox-transformed and mean-centered where appropriate to control for non-normal distribution and mean-centering respectively. All analysis was done in R (version 3.2, www.cran.r-project.org) using the packages *nlme*, *methcomp* and *gamm4* (Wood and Scheipl 2015).

All brain parameters were controlled for the effects of sex and total intra-cranial volume (derived from the *FreeSurfer* pipeline). There were no hemispheric differences for any measure (i.e. white matter volume, cortical surface area, thickness), thus left and right data of each measure were aggregated in to a single value per subject. Independent parameters for the following were included as regressors: self-reported diagnosis of high blood pressure, diabetes, cancer, myocardial infarction, stroke and high cholesterol. Sociodemographic parameters such as education level as well as household income were additionally included, as were self-reported levels of physical activity per week. The numbers of individuals who described themselves as current smokers were low (Table 1) and did not differ across groups, thus smoking was not included as a covariate. Mindful of the potential confound of cognitive decline in older subjects, we repeated our regression analysis using cognitive scores from the Cattell measure as an additional regressor.

As well as total intra-cranial volume, cortical thickness was additionally corrected for grey-white matter percentage. This latter parameter is derived from the grey-scale values of cortical grey matter and the cerebral white matter and is used as a surrogate of myelination changes which are hypothesised to affect the contrast between tissue types and thus may confound measures of thickness (Grydeland *et al.* 2013; Storvse *et al.* 2014; Westlye *et al.* 2009).

2.3.1 Estimating brain age in lean and overweight / obese

In order to compute the white matter-related age difference between lean and overweight / obese, we again divided the data into two categories based on weight, (i.e. lean vs. overweight / obese). We then used spline methods (see above) to model the white matter volume for each group. In turn these models were used to estimate the difference in brain-age between the two groups. To do this we calculated the mean difference in age between the groups for every white matter volume. For example, for the volume 445cm^3 , the model for lean subjects indicated a corresponding age of 60 years, while the model for overweight / obese subjects indicated a corresponding age of 50 years. Thus we estimated a difference in brain-age of ten years for this age range.

Because of the sensitivity of splines to outliers (Supplementary Figure B), we further generated confidence intervals for these values. In doing this, analysis was limited to the age-range 37-87 years in order to obviate difficulties in subtracting a maturational increase (in overweight / obese subjects) from a decrease (in lean subjects) (owing to inverted U-shaped trajectory of the data). In other words, we aimed to prevent the situation of comparing data from mature overweight and obese subjects with data from younger, lean adults with the same volume. For example, owing to the inverted-U shape, lean subjects have an average white matter volume of 445cm^3 at 26 years and 60 years, while overweight and obese subjects have the same volume at 50 years. Thus by excluding subjects below 37 years, we can ensure that our calculation of brain age difference between groups is based on subjects with the same degree of maturity. We also set the following limitations (i) prevent bootstrapping from finding ages younger than max of inverted-U; (ii) set to zero if obese is larger than normal (iii) if there is no one old enough, then set to last age when there was someone old enough. Bootstrapping was performed for 10,000 iterations. We then calculate the 95% and 90% confidence intervals.

3. Results

3.1 White Matter Volume

In line with previous studies, subjects showed a non-linear change in white matter volume with age, increasing to a maximum in middle-age, and decreasing thereafter (**Fig. 2a**) ($F = 25$, $p < 0.0001$).

Critically, there was a statistically significant age: BMI interaction ($t = -3$, $p = 0.003$). The inclusion of Cattell cognitive scores did not affect this result. Comparing models of white matter volume between lean and overweight/obese subjects, we estimated an average increase in brain age associated with adiposity of approximately 10 years, with slight increases in middle-age subjects (approximately 40 years) (**Fig. 2b**).

Detailed examination of the data revealed that a previous diagnosis of elevated cholesterol (as described in self-reported health questionnaire) independently negatively impacted on white matter volume over and above the effects of age and BMI ($t = -2.3$, $p = 0.02$), suggesting that some common metabolic co-morbidities associated with obesity may have an additional and distinct role in increasing susceptibility to neurodegeneration. However there was no evidence of a mitigating effect of exercise, income or education on the BMI-related impact on brain structure when other factors were taken in to account.

3.2 Cortical Surface Area

There was a significant negative effect of age on cortical surface area (based on the pial surface) for each adiposity group ($F = 191$, $p < 0.0001$). However there was no BMI-related difference in total cortical surface area and no age: BMI interaction (**Fig. 3a**) even after including Cattell scores as an additional regressor.

3.3 Cortical Thickness

Like surface area, cortical thickness also decreased in a near-linear trajectory across the lifespan for both groups (**Fig. 3b**) ($F = 338$, $p < 0.0001$), however overweight and obese subjects had increased mean thickness compared to lean controls ($t = 2.2$, $p = 0.03$). There was no age: BMI interaction, even after including Cattell scores as an additional regressor.

To investigate the group differences in cortical thickness further, we performed a per-vertex analysis. There were no statistically significant regional changes in thickness between the groups and no age: BMI interactions at a regional level.

3.4 Cognitive Scores

Cattell scores were available for 463 of the 473 subjects included in the analysis. Scores displayed a significant non-linear decline with age ($F = 79$, $p < 0.001$), and were independently predicted by brain size ($t = 4.4$, $p < 0.001$), however there were no trait (BMI), or trajectory (age: BMI) effects between lean and overweight / obese individuals (**Fig. 3c**).

4. Discussion

These results indicate that obesity has a modulating impact on age-related brain structural changes. We thus provide direct evidence of a relationship that has been strongly suggested by prior epidemiological and biological work. Strikingly, the overall effects of obesity are redolent of those seen with normal ageing. In showing obesity-related alterations in global brain structure, our data support the idea that, like ageing, obesity's impact is widespread across the brain. Specifically our results indicate that increased body mass has a differential effect on brain tissue-type, with differences only observed in cerebral white matter volume and not cortical grey matter. These effects were determined to be maximal in middle-age (approximately 40 years), and equivalent to an increase in white matter-based brain age of 10 years in overweight and obese adults.

While the exact biological mechanisms are complex (*Arnoldussen et al. 2014; Bruce-Keller et al. 2009; Cai 2013; Chung et al. 2009*), one suggestion is that pro-inflammatory cytokines (such as interleukin 6 and tumor necrosis factor- α) and associated hormones such as leptin, produced by adipose tissue, elicit an inflammatory response in microglia which prompts a self-sustaining feedback loop of more cytokines and more inflammation (*Wilson et al. 2002; Wisse 2004; Griffin 2006; Arnoldussen et*

al. 2014). These in turn have been linked to white matter changes (*Bolzenius et al. 2013; Kullmann et al. 2015*). This biological mechanism suggests that the initial insult of obesity may lead to self-perpetuating damage which is manifest as structural changes akin to those seen in normal aging. However it is also observed that obesity itself increases the susceptibility to neurodegeneration (*Sriram et al. 2002*). Indeed, epidemiological studies suggest that obese people have increased complications and mortality associated with traumatic brain injury compared to lean subjects (*Chabok et al. 2013*). Thus it may be that obesity represents an initial insult to the brain that precipitates a cascade of pathological changes, or that it leads to an increased susceptibility to normal ageing mechanisms.

Interestingly, our data suggest that middle-age (approximately 40 years) rather than later life may represent a particular period of vulnerability to the effects of increased adiposity. Multiple studies have linked the onset of white matter changes to middle-age (*Bartzokis et al. 2004; Fotenos et al. 2005*), and indeed previous analyses have also related later-life structural and cognitive changes to vascular risk factors in mid-life (*DeBette et al. 2011*). Moreover, white matter hyperintensities – a common marker of normal aging, are not usually present in adults before mid-life, further emphasizing this as a period of rapid age-related changes (*Hopkins et al. 2006*). The susceptibility of cerebral white matter to adiposity-related influences may be related to the biology of oligodendrocytes which continue to differentiate into the fifth decade and are particularly vulnerable to insults (*Bartzokis 2004*). The finding that increased body mass equates to an average brain-age increase of 10 years further stress the need to tackle obesity, particularly in early adult life. Interventions such as caloric restriction indicate the potential efficacy in preventing or amelioration normal age-related degeneration (*Colman et al. 2014*). Other studies have suggested that socio-economic and lifestyle factors which co-vary with obesity such as income (*Sattler et al. 2012*), education (*Stern et al. 1992*) and exercise (*Radak et al. 2010; Scarmeas et al. 2009*) have all been associated as risk factors for cognitive decline or increased risk of neurodegeneration, however our analysis failed to find such links. We did find that self-reported hypertension was significantly negatively associated with white matter volume, suggesting that comorbidities associated with obesity may independently influence neurodegeneration. Moreover, although we confirmed that age and brain structure were significant independent predictors of cognition, we did not find a mediating pathological effect of body mass on this relationship.

Normal age-related white matter breakdown has been observed independent of changes or loss of neurons or synapses suggesting that white-matter variations associated with obesity do not necessarily imply associated cortical changes (*Bartzokis et al. 2004*). This is in line with our results which demonstrated a differential effect of adiposity on cortical grey and cerebral white matter. However unexpectedly our cortical thickness measures indicated significantly less thinning in overweight / obese subjects compared to lean controls. Why this might be is unclear. One possible explanation is that the accuracy of the thickness measures are compromised by myelination changes associated with normal aging which affect the grey/white contrast ratio. As explored elsewhere (*Grydeland et al. 2013; Storsve et al. 2014; Westlye et al. 2009*), this may have the effect of blurring the boundary between grey and white matter, leading to an artifactual increase in measured cortical thickness. If such myelin changes are augmented in obesity, it may be that this will give rise to apparent reduced rates of cortical thinning with age in overweight and obese subjects. In our experiment we attempted to account for the possible myelin-related confounds on cortical thickness, however if such effects are significantly increased beyond that observed in normal aging, it may be that this correction is insufficient. In summary, although it is possible that adiposity is associated with an increase in cortical thickness, we must conservatively consider the possibility that these results reflect an artifact of tissue contrast as a product of demyelination effects. The possible confounds associated with cortex-based measures in obesity, as well as the differential effects of its comorbidities on white matter (*Verstynen et al. 2013*) highlight the subtleties in assessing BMI-related effects on brain structure.

To date there is some evidence in support of the obesity paradox in terms of morbidity and mortality, in that some studies seem to suggest that obesity may in fact be protective. However the specific relation

to neurodegeneration is unclear. Indeed, while some studies have suggested that weight loss may actually precede dementia (Knopman *et al.*, 2007), other studies suggest that increased adiposity is linked to poorer cognition (Whitmer 2007). In this study we failed to find any such link using the Cattell battery, which is used to capture fluid intelligence by measuring abstract reasoning ability. Whereas crystallized intelligence increases with age, fluid intelligence decreases with declining brain function (Salthouse 2009; Horn and Cattell, 1967). Although previous studies have linked white matter integrity, processing speed and fluid intelligence (Kievit *et al.*, 2016) our results suggest that BMI does not additionally influence the age and brain structure relationship with cognition. More generally, differences in demographic, clinical (e.g. cognitive status) and socio-economic variables controlled for may also contribute to the heterogeneity in the literature regarding the relationship between adiposity and neurodegeneration in population-based studies. Similarly the precise way in which adiposity is measured may also be an important consideration. In this study we used the commonly applied and readily measured variable BMI, however recent studies indicate that adiposity measured in this way may misclassify subjects as cardiometabolically unhealthy (Tomiyama *et al.*, 2016). Moreover, BMI is insensitive to the more clinically relevant distribution of fat on the body, and thus may mask important effects. For example, while waist circumference has been shown to be predictive of cognitive decline, overall obesity has been demonstrated to be neuroprotective in the same sample (West and Haan, 2009). In this study, the absence of more direct measures of relevant health parameters, it is not clear whether our results reflect a relationship between increased adiposity and white matter volume, or whether BMI is simply a proxy for more fundamental covariates. The use of BMI as a measure of adiposity in this study must be considered a limitation. Finally, the omission of extremely obese subjects (due to scanner limitations) may also be considered to be a limitation of this analysis, potentially obfuscating the true scale of the effect of adiposity on brain-age.

Finally, it is important to acknowledge the cross-sectional nature of this analysis and the associated limitations when trying to infer rates of brain aging. While it is not possible to definitively state that obesity is associated with an increased rate of neurodegeneration, our results however do indicate that across the adult lifespan, an increase in body mass is associated with significantly less cerebral white matter volume compared to age-matched lean controls, and that this change is augmented with increasing age. Previous studies have established the similarity between cross-sectional and longitudinal results when assessing brain structural change with age (Fotenos *et al.* 2005), which may support the hypothesis that increased adiposity may be associated with increased rates of brain-ageing, however a longitudinal analysis taking in to account change in body mass as well as brain structure is required to fully establish this link.

5. Conclusion

In the global climate of an increasingly aged population, with rising levels of obesity, it is critical to establish the full health impact of an increased body mass. The results of our study suggest that increased adiposity has a significant impact on brain structure, that it modulates the relationship between white matter volume and age, and that such effects may be equivalent to an increased in brain-age of up to 10 years in overweight and obese individuals. These results support the hypothesis that adiposity confers a significant risk of neurodegeneration and cognitive decline.

Acknowledgments

This work was supported by the Bernard Wolfe Health Neuroscience Fund and the Wellcome Trust. The Cambridge Centre for Ageing and Neuroscience (Cam-CAN) research was supported by the Biotechnology and Biological Sciences Research Council (grant number BB/H008217/1). We are grateful to the Cam-CAN respondents and their primary care teams in Cambridge for their participation in the Cam-CAN study. We also thank colleagues at the MRC Cognition and Brain Sciences Unit MEG and MRI facilities for their assistance.

REFERENCES

- Alexander-Bloch AF, Reiss PT, Rapoport J, McAdams H, Giedd JN, Bullmore ET, Gogtay N. Abnormal Cortical Growth in Schizophrenia Targets Normative Modules of Synchronized Development. *Biol Psychiatry* 2014;76:438-446.
- Arnoldussen IAC, Kiliaan AJ, Gustafson DR. Obesity and dementia: Adipokines interact with the brain. *Eur Neuropsychopharmacol* 2014;24:1982-1999.
- Bartzokis G. Age-related myelin breakdown: a developmental model of cognitive decline and Alzheimer's disease. *Neurobiol Aging* 2004;25:5-18.
- Bartzokis G, Sultzer D, Lu PH, Nuechterlein KH, Mintz J, Cummings JL. Heterogeneous age-related breakdown of white matter structural integrity: implications for cortical "disconnection" in aging and Alzheimer's disease. *Neurobiol Aging* 2004;25:843-851.
- Bland JM, Altman DG. Statistical Methods for Assessing Agreement Between Two Methods of Clinical Measurement. *Lancet* 1986;1:307-310.
- Bolzenius JD, Laidlaw DH, Cabeen RP, Conturo TE, McMichael AR, Lane EM, Heaps JM, Salminen LE, Baker LM, Gunstad J, Paul RH. Impact of body mass index on neuronal fiber bundle lengths among healthy older adults. *Brain Imaging Behav* 2013;7:300-306.
- Brooks SJ, Benedict C, Burgos J, Kempton MJ, Kullberg J, Nordenskjöld R, Kilander L, Nylander R, Larsson E-M, Johansson L, Ahlström H, Lind L, Schiöth HB. Late-life obesity is associated with smaller global and regional gray matter volumes: a voxel-based morphometric study. *Int J Obes (Lond)* 2013;37:230-236.
- Bruce-Keller AJ, Keller JN, Morrison CD. Obesity and vulnerability of the CNS. *Biochim Biophys Acta* 2009;1792:395-400.
- Cai D. Neuroinflammation and neurodegeneration in overnutrition-induced diseases. *Trends Endocrinol Metab* 2013;24:40-47.
- Chabok SY, Yazdanshenas H, Naeeni AF, Ziabakhsh A, Bidar SS, Reihanian A, Bazargan-Hejazi S. The impact of body mass index on treatment outcomes among traumatic brain injury patients in intensive care units. *Eur J Trauma Emerg Surg* 2013;40:51-55.
- Chung HY, Cesari M, Anton S, Marzetti E, Giovannini S, Seo AY, Carter C, Yu BP, Leeuwenburgh C. Molecular inflammation: Underpinnings of aging and age-related diseases. *Ageing Res Rev* 2009;8:18-30.
- Colman RJ, Anderson RM, Johnson SC, Kastman EK, Kosmatka KJ, Beasley TM, Allison DB, Cruzen C, Simmons HA, Kemnitz JW, Weindruch R. Caloric restriction delays disease onset and mortality in rhesus monkeys. *Science* 2009;325:201-204.
- Colman RJ, Beasley TM, Kemnitz JW, Johnson SC, Weindruch R, Anderson RM. Caloric restriction reduces age-related and all-cause mortality in rhesus monkeys. *Nat Commun* 2014;5:3557.
- Cournot M, Marquié JC, Ansiau D, Martinaud C, Fonds H, Ferrières J, Ruidavets JB. Relation between body mass index and cognitive function in healthy middle-aged men and women. *Neurology* 2006;67:1208-1214.
- Dale AM, Fischl B, Sereno MI. Cortical surface-based analysis. I. Segmentation and surface reconstruction. *Neuroimage* 1999;9:179-194.
- Debette S, Seshadri S, Beiser A, Au R, Himali JJ, Palumbo C, Wolf PA, DeCarli C. Midlife vascular risk factor exposure accelerates structural brain aging and cognitive decline. *Neurology* 2011;77:461-468.

Debette S, Wolf C, Lambert J-C, Crivello F, Soumaré A, Zhu Y-C, Schilling S, Dufouil C, Mazoyer B, Amouyel P, Tzourio C, Elbaz A. Abdominal obesity and lower gray matter volume: a Mendelian randomization study. *Neurobiol Aging* 2014;35:378–386.

Doherty GH. Obesity and the ageing brain: could leptin play a role in neurodegeneration? *Curr Gerontol Geriatr Res* 2011;708154.

Fielding RA, Gunstad J, Gustafson DR, Heymsfield SB, Kral JG, Launer LJ, Penninger J, Phillips DIW, Scarmeas N. The paradox of overnutrition in aging and cognition. *Ann N Y Acad Sci* 2013;1287:31–43.

Fischl B, Dale AM. Measuring the thickness of the human cerebral cortex from magnetic resonance images. *PNAS* 2000;97:11050–11055.

Fischl B, Sereno MI, Dale AM. Cortical surface-based analysis. II: Inflation, flattening, and a surface-based coordinate system. *Neuroimage* 1999;9:195–207.

Fischl B, Sereno MI, Tootell RB, Dale AM. High-resolution intersubject averaging and a coordinate system for the cortical surface. *Hum Brain Mapp* 1999;8:272–284.

Flegal KM, Carroll MD, Kit BK, Ogden CL. Prevalence of Obesity and Trends in the Distribution of Body Mass Index Among US Adults, 1999-2010. *JAMA* 2012;307:491–497.

Fotinos AF, Snyder AZ, Girton LE, Morris JC, Buckner RL. Normative estimates of cross-sectional and longitudinal brain volume decline in aging and AD. *Neurology* 2005;64:1032–1039.

Furukawa S, Fujita T, Shimabukuro M, Iwaki M, Yamada Y, Nakajima Y, Nakayama O, Makishima M, Matsuda M, Shimomura I. Increased oxidative stress in obesity and its impact on metabolic syndrome. *J Clin Invest* 2004;114:1752–1761.

Griffin WST. Inflammation and neurodegenerative diseases. *Am J Clin Nutr* 2006;83:470S–474S.

Grydeland H, Walhovd KB, Tamnes CK, Westlye LT, Fjell AM. Intracortical myelin links with performance variability across the human lifespan: results from T1- and T2-weighted MRI myelin mapping and diffusion tensor imaging. *J Neurosci* 2013;33:18618–18630.

Gunstad J, Paul RH, Cohen RA, Tate DF, Spitznagel MB, Grieve S, Gordon E. Relationship Between Body Mass Index and Brain Volume in Healthy Adults. *Int J Neurosci* 2008;118:1582–1593.

Gunstad J, Strain G, Devlin MJ, Wing R, Cohen RA, Paul RH, Crosby RD, Mitchell JE. Improved memory function 12 weeks after bariatric surgery. *Surg Obes Relat Dis* 2011;7:465–472.

Gustafson D, Lissner L, Bengtsson C, Björkelund C, Skoog I. A 24-year follow-up of body mass index and cerebral atrophy. *Neurology* 2004;10:1876-1881.

Haltia LT, Viljanen A, Parkkola R, Kempainen N, Rinne JO, Nuutila P, Kaasinen V. Brain white matter expansion in human obesity and the recovering effect of dieting. *J Clin Endocrinol Metab* 2007;92:3278–3284.

Han X, Jovicich J, Salat D, van der Kouwe A, Quinn B, Czanner S, Busa E, Pacheco J, Albert M, Killiany R, Maguire P, Rosas D, Makris N, Dale A, Dickerson B, Fischl B. Reliability of MRI-derived measurements of human cerebral cortical thickness: The effects of field strength, scanner upgrade and manufacturer. *Neuroimage* 2006;32:180–194.

Hassenstab JJ, Sweet LH, Del Parigi A, McCaffery JM, Haley AP, Demos KE, Cohen RA, Wing RR. Cortical thickness of the cognitive control network in obesity and successful weight loss maintenance: a preliminary MRI study. *Psychiatry Res* 2012;202:77–79.

Hopkins RO, Beck CJ, Burnett DL, Weaver LK, Victoroff J, Bigler ED. Prevalence of White Matter

- Hyperintensities in a Young Healthy Population. *J Neuroimaging* 2006;16:243–251.
- Horn JL, Cattell RB. Age differences in fluid and crystallized intelligence. *Acta Psychologica* 1967; 26: 107 – 129.
- Jefferson AL, Massaro JM, Wolf PA, Seshadri S, Au R, Vasani RS, Larson MG, Meigs JB, J F Keaney J, Lipinska I, Kathiresan S, Benjamin EJ, DeCarli C. Inflammatory biomarkers are associated with total brain volume The Framingham Heart Study. *Neurology* 2007;68:1032–1038.
- Kalani R, Judge S, Carter C, Pahor M, Leeuwenburgh C. Effects of Caloric Restriction and Exercise on Age-Related, Chronic Inflammation Assessed by C-Reactive Protein and Interleukin-6. *J Gerontol A Biol Sci Med Sci* 2006;61:211–217.
- Kievit RA, Davis SW, Griffiths JD, Correia MM, Cam-CAN, Henson RNA. A watershed model of individual differences in fluid intelligence. *bioRxiv* 2016 doi: <http://dx.doi.org/10.1101/041368>
- Knopman DS, Edland ED, Cha MS, Petersen RC, Rocca WA. Incident dementia in women is preceded by weight loss by at least a decade. *Neurology* 2007; 69: 739 – 746.
- Kullmann S, Schweizer F, Veit R, Fritsche A, Preissl H. Compromised white matter integrity in obesity. *Obes Rev* 2015;16:273–281.
- Kuperberg GR, Broome MR, McGuire PK, David AS, Eddy M, Ozawa F, Goff D, West WC, Williams SCR, van der Kouwe AJW, Salat DH, Dale AM, Fischl B. Regionally localized thinning of the cerebral cortex in schizophrenia. *JAMA Psychiatry* 2003;60:878–888.
- Masoro EJ. Overview of caloric restriction and ageing. *Mech Ageing Dev* 2005;126:913–922.
- Pannacciulli N, Le DSNT, Chen K, Reiman EM, Krakoff J. Relationships between plasma leptin concentrations and human brain structure: a voxel-based morphometric study. *Neurosci Lett* 2007;412:248–253.
- Qizilbash N, Gregson J, Johnson ME, Pearce N, Douglas I, Wing K, Evans SJW, Pocock SJ. BMI and risk of dementia in two million people over two decades: a retrospective cohort study. *Lancet Diabetes Endocrinol* 2015;3:431–436.
- Radak Z, Hart N, Sarga L, Koltai E, Atalay M, Ohno H, Boldogh I. Exercise Plays a Preventive Role Against Alzheimer's Disease. *J Alzheimers Dis* 2010;20:777-783.
- Rosas HD, Liu AK, Hersch S, Glessner M, Ferrante RJ, Salat DH, Van der Kouwe A, Jenkins BG, Dale AM, Fischl B. Regional and progressive thinning of the cortical ribbon in Huntington's disease. *Neurology* 2002;58:695-701
- Salthouse TA. When does age-related cognitive decline begin? *Neurobiol Aging*. 2009; 30: 507 – 514.
- Sattler C, Toro P, Schönknecht P, Schröder J. Cognitive activity, education and socioeconomic status as preventive factors for mild cognitive impairment and Alzheimer's disease. *Psychiatry Res* 2012;196:90–95.
- Scarmeas N, Luchsinger JA, Schupf N, Brickman AM, Cosentino S, Tang MX, Stern Y. Physical Activity, Diet, and Risk of Alzheimer Disease. *JAMA* 2009;302:627–637.
- Shafiq MA, Tyler LK, Dixon M, Taylor JR, Rowe JB, Cusack R, Calder AJ, Marsden-Wilson WD, Duncan J, Dalglish T, Henson RN, Brayne C, Matthews FE, Cam-CAN. The Cambridge Centre for Ageing and Neuroscience (Cam-CAN) study protocol: a cross-sectional, lifespan, multidisciplinary examination of healthy cognitive ageing. *BMC Neurol* 2014;14:204.
- Sharkey RJ, Karama S, Dagher A. Overweight is not associated with cortical thickness alterations in children. *Front Neurosci* 2015;9:24.

- Sohal RS, Weindruch R. Oxidative Stress, Caloric Restriction, and Aging. *Science* 1996;273:59–63.
- Someya S, Yamasoba T, Weindruch R, Prolla TA, Tanokura M. Caloric restriction suppresses apoptotic cell death in the mammalian cochlea and leads to prevention of presbycusis. *Neurobiol Aging* 2007;28:1613–1622.
- Spaulding CC, Walford RL, Effros RB. Calorie restriction inhibits the age-related dysregulation of the cytokines TNF- α and IL-6 in C3B10RF1 mice. *Mech Ageing Dev* 1997;93:87–94.
- Sriram K, Benkovic SA, Miller DB, O'Callaghan JP. Obesity exacerbates chemically induced neurodegeneration. *NSC* 2002;115:1335–1346.
- Stanek KM, Grieve SM, Brickman AM, Korgaonkar MS, Paul RH, Cohen RA, Gunstad JJ. Obesity is associated with reduced white matter integrity in otherwise healthy adults. *Obesity (Silver Spring)* 2011;19:500–504.
- Stern Y, Alexander GE, Prohovnik I, Mayeux R. Inverse relationship between education and parietotemporal perfusion deficit in Alzheimer's disease. *Ann Neurol* 1992;32:371–375.
- Storsve AB, Fjell AM, Tamnes CK, Westlye LT, Overbye K, Aasland HW, Walhovd KB. Differential Longitudinal Changes in Cortical Thickness, Surface Area and Volume across the Adult Life Span: Regions of Accelerating and Decelerating Change. *J Neurosci* 2014;34:8488–8498.
- Taki Y, Kinomura S, Sato K, Inoue K, Goto R, Okada K, Uchida S, Kawashima R, Fukuda H. Relationship between body mass index and gray matter volume in 1,428 healthy individuals. *Obesity (Silver Spring)* 2008;16:119–124.
- Tomiya AJ, Hunger JM, Nguyen-Cuu J, Wells C. Misclassification of cardiometabolic health when using body mass index categories in NHANES 2005-2012. *Int J Obesity* 2016: 1-4
- Veit R, Kullmann S, Heni M, Machann J, Häring H-U, Fritsche A, Preissl H. Reduced cortical thickness associated with visceral fat and BMI. *Neuroimage: Clin* 2014;6:307–311.
- Verstynen TD, Weinstein A, Erickson KI, Sheu LK, Marsland AL, Gianaros PJ. Competing physiological pathways link individual differences in weight and abdominal adiposity to white matter microstructure. *Neuroimage* 2013;79:129–137.
- Walhovd KB, Fjell AM, Reinvang I, Lundervold A, Dale AM, Eilertsen DE, Quinn BT, Salat D, Makris N, Fischl B. Effects of age on volumes of cortex, white matter and subcortical structures. *Neurobiol Aging* 2005;26:1261–1270.
- West NA, Haan MN. Body adiposity in late life and risk of dementia or cognitive impairment in a longitudinal community-based study. *J Gerontol Ser A Biol Sci Med Sci.* 2009; 64: 103 – 109.
- Westlye LT, Walhovd KB, Dale AM, Espeseth T, Reinvang I, Raz N, Agartz I, Greve DN, Fischl B, Fjell AM. Increased sensitivity to effects of normal aging and Alzheimer's disease on cortical thickness by adjustment for local variability in gray/white contrast: a multi-sample MRI study. *Neuroimage* 2009;47:1545–1557.
- Whitmer RA, Gunderson EP, Barrett-Connor E, Quesenberry CP, Yaffe K. Obesity in middle age and future risk of dementia: a 27 year longitudinal population based study. *BMJ* 2005;330:1360–1360.
- Wikgren M, Karlsson T, Söderlund H, Nordin A, Roos G, Nilsson L-G, Adolfsson R, Norrback K-F. Shorter telomere length is linked to brain atrophy and white matter hyperintensities. *Age Ageing* 2014;43:212–217.
- Willette AA, Kapogiannis D. Does the brain shrink as the waist expands? *Ageing Res Rev* 2015;20:86–97.

Wilson CJ, Finch CE, Cohen HJ. Cytokines and Cognition—The Case for A Head-to-Toe Inflammatory Paradigm. *J Am Geriatr Soc* 2002;50:2041-2056.

Wisse BE. The Inflammatory Syndrome: The Role of Adipose Tissue Cytokines in Metabolic Disorders Linked to Obesity. *J Am Soc Nephrol* 2004;15:2792–2800.

Wood S, Scheipl F. 2015. Gamm4: Generalized additive mixed models using mgcv and lme4. R package version 0.2.-3. Available at <http://CRAN.R-project.org/package=gamm4>. Accessed August 13, 2015.

Xu WL, Atti AR, Gatz M, Pedersen NL, Johansson B, Fratiglioni L. Midlife overweight and obesity increase late-life dementia risk: a population-based twin study. *Neurology* 2011;76:1568–1574.

ACCEPTED MANUSCRIPT

Figure 1 Example of grey and white matter segmentations in *FreeSurfer* for, sex-matched subjects (a) lean (56 years, BMI 19.5) and (b) obese (50 years, BMI = 43.4).

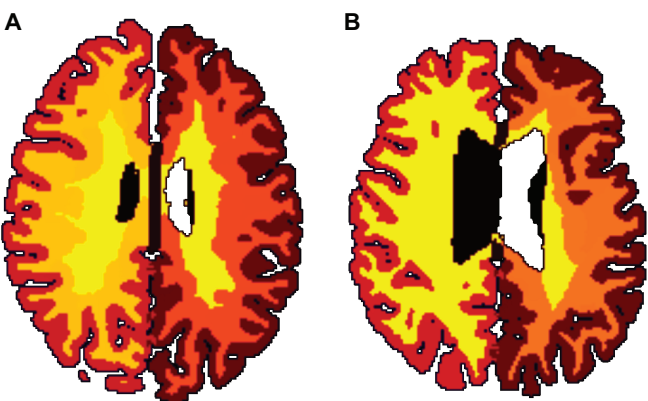
Figure 2 Age-related change in white matter volume in overweight and obese subjects estimated to equate to an average increase in brain-age of 10 years compared to controls. (a) age-trajectory of white matter volume for lean (BMI 18.5 – 25kgm⁻²) and overweight (BMI 25 – 30kgm⁻²) and obese (BMI > 30kgm⁻²). The difference in “brain-age” between the groups was calculated by comparing the difference in age between groups for each value of white matter volume. For example, at 50 years, overweight / obese subjects have an estimates white matter volume of 445cm³ while lean subjects reach the same volume at the average age of 60 years, equating to an average 10 years increased brain-age for overweight / obese subjects. (b) Estimated difference in brain age between lean and overweight – obese subjects based on differences in population models of white matter volume change with age. 90% and 95% confidence intervals generated using bootstrap methods (10,000 iterations).

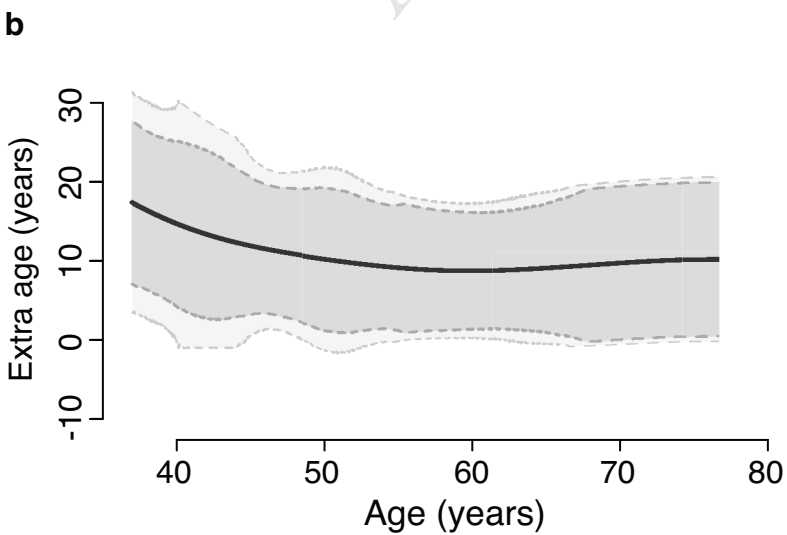
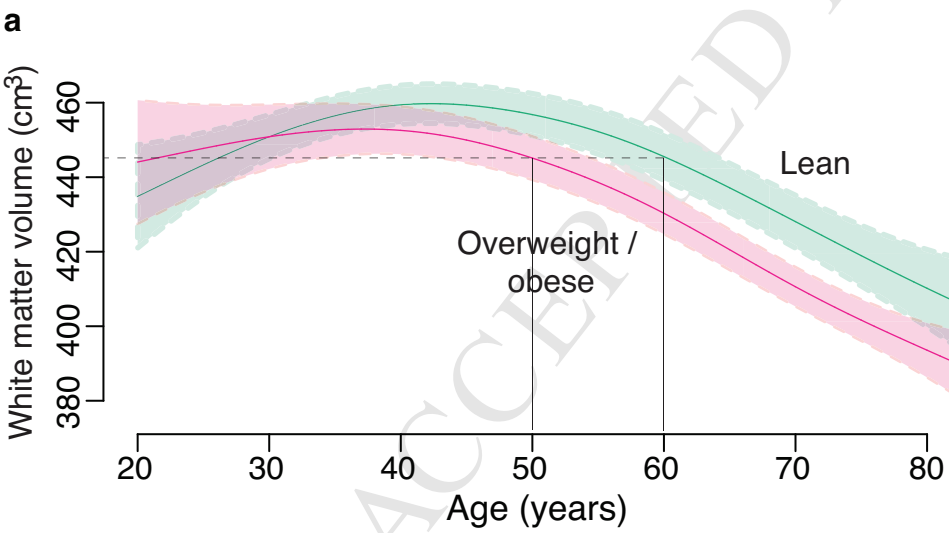
Figure 3 Age-related change in (a) cortical surface area, (b) thickness and (c) cognitive scores (cattell) contrasted between lean and overweight / obese subjects.

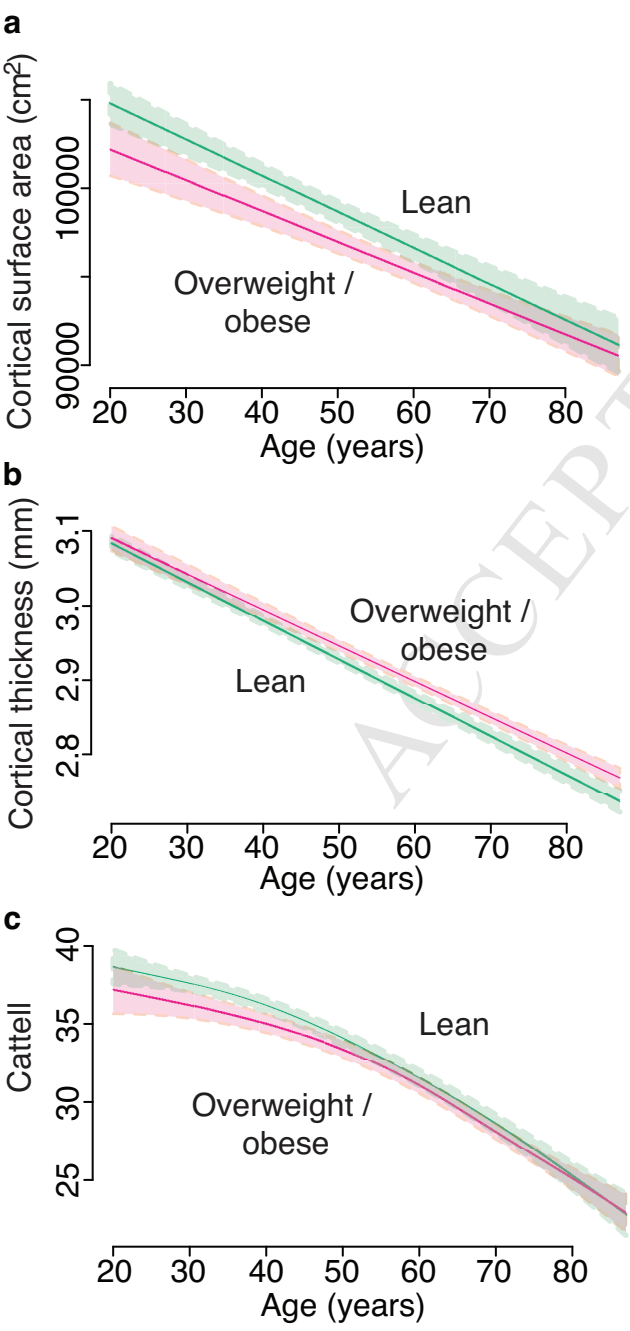
Table 1: Demographic information

	<i>Lean</i>	<i>Overweight</i>	<i>Obese</i>	<i>P for heterogeneity</i>
BMI (kg/m ²)	18.5 – 24.99	25 – 29.99	≥30	
(mean)	22.7 ± 1.7	27.1 ± 1.6	33.5 ± 3.8	
No. subjects (%)	246 (51)	150 (31)	77 (18)	
<i>Sociodemographic variables</i>				
Age (years)	48 ± 16	57 ± 17	61 ± 16	< 0.0001
Female / Male	122 / 124	66 / 84	49 / 28	< 0.0001
University degree or higher	180	89	33	< 0.0001
Household income (above median)	149	84	38	0.1
<i>Health behaviors</i>				
Current smoking (%)	16	11	6	0.9
Physical activity (kJ/day/Kg)	47 ± 20	47 ± 22	43 ± 23	0.44
<i>Health measures</i>				
Systolic BP (mm Hg)	116 ± 15	123 ± 16	126 ± 19	< 0.0001
Diastolic BP (mm Hg)	71 ± 10	75 ± 11	77 ± 11	< 0.0001
<i>Disease diagnosis</i>				
Myocardial infarction	1	3	1	0.3
Cancer	11	6	9	0.03
Diabetes	3	6	9	< 0.0001
Stroke	4	0	1	0.3
High cholesterol	21	17	17	< 0.01
High blood pressure	19	30	29	< 0.001

ACCEPTED MANUSCRIPT







Highlights

1. Cross-sectional MR-based analysis of the aging effects of BMI on brain structure.
2. Results based on population cohort of 527 adults from 20-87 years.
3. BMI modulates the relationship between age and white matter volume (WMV).
4. Obesity equates to an average difference in WMV-based brain-age of 10 years.
5. Aging effects in the cortex appeared unaffected by BMI.

ACCEPTED MANUSCRIPT