



OPEN ACCESS

ORIGINAL ARTICLE

Whole grain-rich diet reduces body weight and systemic low-grade inflammation without inducing major changes of the gut microbiome: a randomised cross-over trial

Henrik Munch Roager,¹ Josef K Vogt,² Mette Kristensen,³ Lea Benedicte S Hansen,² Sabine Ibrügger,³ Rasmus B Mærkedahl,^{3,4} Martin Iain Bahl,¹ Mads Vendelbo Lind,^{3,5} Rikke L Nielsen,² Hanne Frøkiær,⁴ Rikke Juul Gøbel,⁶ Rikard Landberg,⁵ Alastair B Ross,⁵ Susanne Brix,⁷ Jesper Holck,⁸ Anne S Meyer,⁸ Morten H Sparholt,⁹ Anders F Christensen,⁹ Vera Carvalho,¹ Jens Juul Holst,^{6,10} Jüri Johannes Rumessen,¹¹ Allan Linneberg,^{12,13,14} Thomas Sicheritz-Pontén,² Marlene D Dalgaard,⁷ Andreas Blennow,¹⁵ Henrik Lauritz Frandsen,¹ Silas Villas-Bôas,¹⁶ Karsten Kristiansen,¹⁷ Henrik Vestergaard,^{6,18} Torben Hansen,⁶ Claus T Ekstrøm,¹⁹ Christian Ritz,³ Henrik Bjørn Nielsen,^{2,20} Oluf Borbye Pedersen,⁶ Ramneek Gupta,² Lotte Lauritzen,³ Tine Rask Licht¹

► Additional material is published online only. To view, please visit the journal online (<http://dx.doi.org/10.1136/gutjnl-2017-314786>).

For numbered affiliations see end of article.

Correspondence to

Associate Professor Ramneek Gupta, Department of Bio and Health Informatics, Technical University of Denmark, 2800 Kgs Lyngby, Denmark; ramneek@cbs.dtu.dk, Associate Professor Lotte Lauritzen, Department of Nutrition, Exercise and Sports, Faculty of Science, University of Copenhagen, Copenhagen, 1958 Frederiksberg, Denmark; ll@nxs.ku.dk and Professor Tine Rask Licht, National Food Institute, Technical University of Denmark, 2800 Kgs Lyngby, Denmark; trli@food.dtu.dk

HMR and JKV contributed equally.

Received 3 July 2017

Revised 11 October 2017

Accepted 12 October 2017



CrossMark

To cite: Roager HM, Vogt JK, Kristensen M, et al. Gut Published Online First: [please include Day Month Year]. doi:10.1136/gutjnl-2017-314786

ABSTRACT

Objective To investigate whether a whole grain diet alters the gut microbiome and insulin sensitivity, as well as biomarkers of metabolic health and gut functionality.

Design 60 Danish adults at risk of developing metabolic syndrome were included in a randomised cross-over trial with two 8-week dietary intervention periods comprising whole grain diet and refined grain diet, separated by a washout period of ≥ 6 weeks. The response to the interventions on the gut microbiome composition and insulin sensitivity as well on measures of glucose and lipid metabolism, gut functionality, inflammatory markers, anthropometry and urine metabolomics were assessed.

Results 50 participants completed both periods with a whole grain intake of 179 ± 50 g/day and 13 ± 10 g/day in the whole grain and refined grain period, respectively. Compliance was confirmed by a difference in plasma alkylresorcinols ($p < 0.0001$). Compared with refined grain, whole grain did not significantly alter glucose homeostasis and did not induce major changes in the faecal microbiome. Also, breath hydrogen levels, plasma short-chain fatty acids, intestinal integrity and intestinal transit time were not affected. The whole grain diet did, however, compared with the refined grain diet, decrease body weight ($p < 0.0001$), serum inflammatory markers, interleukin (IL)-6 ($p = 0.009$) and C-reactive protein ($p = 0.003$). The reduction in body weight was consistent with a reduction in energy intake, and IL-6 reduction was associated with the amount of whole grain consumed, in particular with intake of rye.

Conclusion Compared with refined grain diet, whole grain diet did not alter insulin sensitivity and gut microbiome but reduced body weight and systemic low-grade inflammation.

Trial registration number NCT 01731366; Results.

INTRODUCTION

Whole grain consumption associates with decreased risk of several lifestyle-related diseases including type 2 diabetes and cardiovascular diseases.^{1,2} Studies suggest that consumption of whole grain beneficially influences glucose metabolism,³ adiposity,⁴ blood lipids⁵ and markers of inflammation.⁶ A putative mediator of these effects is the gut microbiota.⁷ Whole grains are rich in phenolic phytochemicals and dietary fibres that are metabolised by the gut microbiota into short-chain fatty acids (SCFA),⁸ which have been linked to secretion of gut hormones,⁹ glucose and lipid metabolism,^{10,11} immune homeostasis¹² and gut permeability.¹³ Only a limited number of human interventions have related whole grain-induced improvements on host metabolism with faecal microbiota composition,^{14–19} and so far the results have been inconclusive. This may be a result of large interindividual differences in microbiota composition,^{16,20} lack of gut microbiota exploration at high taxonomic and functional resolution level, high variability in background diet or lack of statistical power. Currently, it is not established to what extent beneficial effects of whole grain consumption are associated with the gut microbiota.

The present study thus aimed to address the hypothesis that replacing refined grains with whole grains improves insulin sensitivity and alters the gut microbiome (primary outcomes) and biomarkers of metabolic health and gut functionality (secondary outcomes). This was investigated in a randomised cross-over trial comparing the effects of a mixed whole grain diet to an equivalent control diet based on refined grains.

Gut microbiota

Significance of this study

What is already known on this subject?

- ▶ In epidemiological studies, whole grain consumption has repeatedly been associated with decreased risk of lifestyle-related diseases, such as type-2 diabetes and cardiovascular diseases.
- ▶ Accumulating evidence from rodent studies points towards the gut microbiota as a mediator of dietary impact on metabolic health.
- ▶ Microbial degradation of whole grains, rich in dietary fibres, leads to production of short-chain fatty acids and phenolic phytochemicals, which may exert beneficial effects on the host metabolism.
- ▶ Human dietary intervention studies show inconclusive results on the effect of whole grain intake on the gut microbiota and metabolic health.

What are the new findings?

- ▶ Intake of a diet rich in whole grains was associated with reduced energy intake and body weight and circulating markers of inflammation in adults at risk of developing metabolic syndrome.
- ▶ Reduction in fasting serum concentrations of interleukin 6 was directly associated to the amount of whole grain intake, in particular to rye intake.
- ▶ Compared with the refined grain diet, the whole grain-rich diet did not significantly modify faecal microbiome composition and metabolic potential as assessed by shotgun sequencing-based metagenomics and 16S rRNA amplicon profiling, fasting plasma concentrations of short-chain fatty acids, urine metabolomics or measures of intestinal integrity.

How might it impact on clinical practice in the foreseeable future?

- ▶ Whole grain consumption significantly reduces energy intake and body weight in overweight adults, emphasising the feasibility of replacing refined grain foods with whole grains in weight management strategies.
- ▶ Whole grain consumption has beneficial effects on blood markers of subclinical inflammation in adults at risk of developing metabolic syndrome, and higher intake of whole grains should be encouraged in those at risk of inflammation-related diseases.

SUBJECTS AND METHODS

Study participants

A total of 60 adults were included in the study.²¹ The participants were between 20 and 65 years old and weight stable with a body mass index of 25–35 kg/m² and/or increased waist circumference (≥ 94 cm for men and ≥ 80 cm for women). Additionally, they fulfilled at least one of the following criteria: non-diabetic dysglycaemia (fasting plasma glucose 6.1–6.9 mmol/L), dyslipidaemia (fasting serum high-density lipoprotein (HDL) cholesterol ≤ 1.03 mmol/L for men and ≤ 1.29 mmol/L for women) or hypertension (systolic blood pressure (BP) >130 mm Hg or medical treatment of hypertension). Exclusion criteria are described in details elsewhere.²¹

Study protocol

The study was a randomised, controlled cross-over trial with two 8-week dietary intervention periods comprising a whole grain

diet and a refined grain diet in random order, separated by a washout period of at least 6 weeks (see online supplementary figure S1). Using a variable block size, the randomisation list was generated by an investigator without contact to the participants, and a dietitian allocated participants to sequence of intervention matching the list of participant identifications with the randomisation list. It was not feasible to blind during the intervention, but participants and investigators involved in outcome assessment were blinded until the first examination day and during sample analysis and the initial data analysis. The study aimed at a daily consumption of ≥ 75 g/day of whole grains during the whole grain intervention and of <10 g/day during the refined grain intervention. The study examinations were initiated in July 2012 and completed in November 2013 and were conducted at the Department of Nutrition, Exercise and Sports at the University of Copenhagen, Denmark. It was approved by the Municipal Ethical Committee of the Capital Region of Denmark in accordance with the Helsinki Declaration (H-2-2012-065) and the Data Protection Agency (2007-54-0269) and registered at www.clinicaltrials.gov (NCT01731366). The detailed description of the design and methods, the study flow, as well as hypotheses and rationales of the intervention have previously been described.²¹

Intervention diets

Study products

During the two dietary interventions, participants were provided with a selection of whole grain or comparable refined grain products (see online supplementary table S1). Participants were instructed to substitute all cereals in their diet with the study products and to consume these in an ad libitum manner. Products were considered as whole grain if they consisted of the intact, ground, cracked or flaked caryopses, where the starchy endosperm, germ and bran are present in the same relative proportions as in the intact caryopsis according to the definition proposed by the HEALTHGRAIN consortium in 2013.²² All whole grain products contained a minimum of 50% whole grain per dry matter. Analysis of study products for alkylresorcinols, resistant starch, arabinoxylan and monosaccharide content are described in online supplementary materials.

Dietary assessments

The daily consumption of study dietary products (amount and type) as well as any deviations from the dietary instructions were registered in a study diary throughout both interventions. The study diary was used to calculate absolute consumption of the dietary products during the intervention and to assess compliance. Compliance was furthermore evaluated by measuring fasting concentrations of plasma alkylresorcinols, which are biomarkers of whole grain intake.²³ Total dietary intake to determine whole grain, total energy and macronutrient intake was assessed by a 4-day precoded dietary registration, developed by the National Food Institute at the Technical University of Denmark.²⁴ The diet registration was performed on 2 weekdays and 2 weekend days at baseline, reflecting habitual diet and at the end of each of the interventions to evaluate potential changes in diet beyond the intervention.

Experimental procedures

Examinations were conducted in the beginning and in the end of each intervention. On each of the four examination visits, participants arrived in the morning after having fasted for ≥ 10 hours (h) and abstained from strenuous physical activity for ≥ 10 hour and alcohol consumption for ≥ 24 hour. In addition, participants

were asked to avoid smoking and tooth brushing on the mornings of the examination days.

Assessment of metabolic markers, anthropometry and blood pressure

On each examination visit, fasting morning blood samples were taken in supine position after a 10 min rest ($t=0$ min). Both serum and plasma fractions were obtained from the blood samples and immediately stored at -80°C until analyses. Biochemical analyses of blood samples including markers of glucose and lipid metabolism, hormones and inflammatory markers as well as quantification of plasma alkylresorcinols and SCFA are described in the online supplementary materials. The methodologies for the anthropometric and BP measurements are also described in the online supplementary materials.

Postprandial tests

In addition to the fasting blood samples, postprandial samples were obtained ($t=30, 60, 120$ and 180 min) after ingestion of a standardised breakfast, consisting of white wheat bread, a pastry, butter, jam, cheese and 200 mL water ($\sim 3000\text{ kJ}$, 52.6% of the energy (E%) from fat, 39.7% E% carbohydrates, 7.8% E% protein) and a drink containing lactulose (5 g) and mannitol (2 g). Breath hydrogen was measured in exhaled breath twice at fasting, and at the indicated times after the standardised breakfast as a proxy measure of colonic fermentation using a validated handheld Gastro+Gastrolyzer (Bedfont Scientific, Rochester, UK).

Gut permeability assessment

On arrival on each examination day, participants emptied their bladder. Urine was collected for 4 hours after the standardised breakfast and the lactulose-mannitol containing drink. Urine was stored in the fridge during collection, pooled, mixed and aliquoted into 2.0 mL tubes and stored at -80°C . The percentage of excreted lactulose and mannitol in urine was measured as described in online supplementary materials. Gut permeability was estimated based on the ratio of urinary lactulose and mannitol. In addition, fasting serum concentrations of zonulin, a suggested biomarker of gut barrier function,²⁵ were measured using IDK Zonulin ELISA kit (Immundiagnostik AG, Bensheim, Germany). The lower limit of detection was 0.22 ng/mL .

Faecal shotgun sequencing-based metagenomics and 16S rRNA amplicon profiling

Faecal samples were routinely collected on the morning of the examination day and stored at 5°C for maximally 24 hours before being homogenised in sterile water 1:1, aliquoted to cryotubes and stored at -80°C . Microbial DNA was extracted from the faecal samples as previously described^{26 27} and subjected to both 16S rRNA gene sequencing as described in Roager *et al.*²⁸ and shotgun metagenomic sequencing with an average seven gigabases readout per sample (Illumina 100bp pair end) as described in online supplementary materials. The microbial sequences obtained from shotgun metagenomics were mapped to the integrated catalogue of reference genes of the human gut microbiome.²⁹ The genes were coabundance binned into metagenomic species³⁰ from hereon referred to as species. The species were taxonomically annotated by sequence similarity to known reference genomes, which were downloaded as described by Nordahl *et al.*³¹ Microbial species and gene diversity, respectively, were calculated by means of Shannon index and richness, which is the number of observations per sample. To assign functions to genes, all genes were annotated to carbohydrate active enzymes

(CAZy) from the CAZy database³² and to prokaryotic Kyoto Encyclopaedia of Genes and Genomes orthologies (KOs).³³ Only species, CAZy and KOs detected in at least 10 individuals were included in statistical analyses. Microbiome data of one faecal sample from one individual were excluded, as the microbiome was significantly affected by intake of antibiotics. Details of the metagenomic sequence analysis are available in online supplementary materials.

Measurement of intestinal transit time

For six consecutive days prior to the examination visit 1, 2 and 4, the participants ingested 24 radiopaque markers in the morning on a daily basis to ensure saturation. On the examination day, abdominal radiographs were performed in the afternoon approximately 30 hours after ingestion of the last markers. Intestinal transit time was estimated based on number of visible markers on the obtained X-ray as previously described.²⁸

Urinary metabolic profiling

A complete set of urine samples were available from 48 participants. Exploratory non-targeted urinary metabolic profiling was performed by ultraperformance liquid chromatography mass spectrometry (UPLC-MS) with a quality control (QC) sample injected once for every 10 urine samples as previously described.²⁸ Furthermore, all urine samples were derivatised using methyl chloroformate and profiled by gas chromatography mass spectrometry (GC-MS), enabling the relative quantification of amino and non-amino organic acids (78 metabolites).³⁴ Details on the GC-MS analysis are available in online supplementary material. The coefficient of variance (CV)% of the metabolites in the QC samples measured by UPLC-MS in positive (1293 features) and negative (218 features) ionisation mode was on average 7% and 11% , respectively, whereas the CV% of the metabolites in the QC samples measured by GC-MS was 12% on average. The metabolites were identified according to four different identification levels as described by the Metabolomics Standard Initiative.³⁵ Metabolite identification details are available in the online supplementary materials.

Statistical analyses

All statistical analyses were performed in R version 3.1. Sample size estimation was based on a 0.25 difference in the homeostatic model assessment for insulin resistance (HOMA-IR) with an SD of 0.6 ,²¹ which at a 5% significance level and with 85% statistical power, required a sample size of 51 completing participants and a total of 60 with allowance of a 15% dropout. (See further details in the online supplementary materials). Available case analyses were carried out for all outcomes. The effects of the intervention on all outcomes were analysed using a linear mixed model with subject-specific and subject-within-visit random effects. The model included a treatment-visit interaction and adjustment for age and gender. The treatment-visit interaction term was defined to have eight levels including all combinations of treatment (two levels) and visit (four levels: visit 1=baseline 1, visit 2, visit 3=postrandomisation baseline 2, visit 4). For physiological outcomes, a common baseline effect (at visit 1) was assumed for both treatments, as it should be the same for all participants due to randomisation (corresponding to an interaction with seven levels). In addition, adjustment for body weight was included to ensure that changes in inflammatory markers were not associated with changes in body weight. Model assumptions on variance homogeneity and normality were assessed by visual inspection of residual plots, histograms and normal

Gut microbiota

probability plots. Data not normally distributed including urine metabolome and faecal microbiome data were log transformed before analysis by the linear mixed model. Both prerandomisation and postrandomisation baseline measurements, obtained for visit 1 and 3, respectively, were considered to be part of the outcome to adjust for putative carry-over effects.³⁶ For period 1, the treatment effect was estimated as the change from baseline at visit 1. For period 2, postrandomisation baseline measurements allowed estimation of a treatment effect during period 2 to be calculated as the change from the postrandomisation baseline at visit 3. The overall treatment effect was estimated as the average of the period 1 and period 2 treatment effects, and the differential change was estimated as the difference between the two estimated intervention effects.

Urine metabolome and faecal microbiome p values were adjusted for multiple comparisons using the Benjamini-Hochberg false discovery rate (FDR).³⁷ For comparison of endpoints of the two periods, a paired t-test or a Wilcoxon matched pairs test was used depending on whether the data were normally distributed. For comparison of data with only three time points available (dietary intake based on food diaries and intestinal transit time), one-way repeated measures analysis of variance (ANOVA) followed by Tukey's Multiple Comparison test were used. For postprandial data (plasma glucose, serum insulin, serum-free fatty acids (FFA), plasma glucagon-like peptide (GLP)-1, plasma GLP-2 and breath hydrogen) collected with repeated measurements total area under the curve (AUC) was calculated by the trapezoidal rule as the entire area above zero. Post-prandial AUC values were compared between treatment groups using the linear mixed model. Correlations between changes in whole grain intake and changes in serum interleukin (IL)-6 and C-reactive protein (CRP), respectively, and correlations between changes in body weight, free fat mass, sagittal abdominal diameter (SAD) and changes in energy intake, as well as correlations

between concentrations of urinary metabolites and whole grain intake at endpoints were calculated using Spearman's rank or Pearson's correlation depending on whether the data were normally distributed. For the linear regression analyses, data on plasma alkylresorcinol homologues, whole grain and fibre intake were log transformed and zero values were substituted with the minimum value.

RESULTS

Baseline characteristics of study participants and completion rates

A total of 50 participants (18 men and 32 women) completed the two dietary intervention periods. See online supplementary table S2 for baseline characteristics and online supplementary figure S2 for a flow diagram.

Dietary intake and compliance

Overall, participants complied well with both diets, based on both food diaries and plasma alkylresorcinol concentrations. Consumption of equivalent study products was successfully matched between the two periods (see online supplementary table S3). Whole grain consumption was 68 ± 45 g/day (mean \pm SD) at baseline, 179 ± 50 g/day during the whole grain period and 13 ± 10 g/day during the refined grain-based period (table 1), resulting in significant differences in whole grain and dietary fibre intake between the two periods (ANOVA; $p < 0.0001$, table 1). Fasting plasma alkylresorcinols were increased by the whole grain diet compared with the refined grain diet (ANOVA; $p < 0.0001$, table 1) and were positively correlated with consumption of whole grains (Spearman's $\rho = 0.69$, $p < 0.0001$) and total dietary fibre (Spearman's $\rho = 0.52$, $p < 0.0001$), providing unbiased support for subject compliance to the protocol. As expected, compared with the refined grain products, the whole grain products had higher contents of dietary

Table 1 Total mean daily intake of energy and macronutrient at baseline and during the whole grain and refined grain diet periods as well as intake of provided food products (values are presented as mean \pm SD, n=50)

	Baseline	Refined grain diet	Whole grain diet	p Value
Total daily intake*				
Energy (MJ/day)	9.36 \pm 2.29	9.47 \pm 2.11	9.22 \pm 2.33	0.78
Carbohydrate (E%)	44.6 \pm 5.2 ^a	49.4 \pm 5.1 ^b	48.5 \pm 5.4 ^b	<0.001
Fat (E%)	35.9 \pm 4.9 ^a	29.6 \pm 5.4 ^b	30.0 \pm 5.6 ^b	<0.001
Protein (E%)	14.6 \pm 2.0 ^a	15.5 \pm 2.1 ^b	15.3 \pm 2.1 ^b	0.012
Dietary fibre (g/day)	23 \pm 9 ^a	21 \pm 7 ^a	33 \pm 10 ^b	<0.001
Whole grain (g/day)	68 \pm 45 ^a	13 \pm 10 ^c	179 \pm 50 ^b	<0.001
Gluten (g/day)	12.3 \pm 4.1 ^a	17.8 \pm 3.8 ^b	17.8 \pm 4.9 ^b	<0.001
Intake from provided products†				
Provided products (g/day)	-	255 \pm 53	244 \pm 50	0.074
Whole grain (g/day)	-	6.0 \pm 4.8	157.9 \pm 35.0	<0.001
Dietary fibre (g/day)	-	10.4 \pm 2.4	23.3 \pm 4.8	<0.001
Energy (MJ/day)	-	3.17 \pm 0.67	2.79 \pm 0.59	<0.001
Energy density (KJ/g)	-	12.4 \pm 0.5	11.5 \pm 0.6	<0.001
Alkylresorcinols (mg/day)‡	-	42 \pm 12	92 \pm 20	<0.001
Biomarker of whole grain intake				
Plasma alkylresorcinols (nmol/L)§	167 (137–198) ^a	134 (107–161) ^a	380 (255–505) ^b	<0.0001

*Daily energy and macronutrient intake were assessed by 4-day precoded food diaries at baseline and after each intervention period. Differences between diets were assessed by a one-way analysis of variance with Tukey's multiple comparison test. Different superscripts (^a and ^b) indicate statistical differences within rows ($p < 0.05$).

†Intake of study products was assessed by daily registrations in study diaries during both treatment periods. Differences between the two intervention diets were assessed by paired t-tests.

‡Note that two of the provided products for the refined grain intervention were relatively high in alkylresorcinols, however, still lower than the equivalent whole grain products (see online supplementary table S1).

§Values are presented as mean (CI 95%).

fibre, arabinoxylan, alkylresorcinols and resistant starch (see online supplementary table S1) as well as higher average contents of arabinose, xylose and fucose and reduced contents of galacturonic acid (see online supplementary table S4). Although energy intake from the provided food products was 14% higher during the control period than during the whole grain period (paired t-test; $p<0.001$), the overall intake of energy (ie, provided foods and non-provided foods) did not differ between the two diet periods (table 1). Intake of nutrients and food groups did not differ between the two diets, except for dietary fibre and whole grains (table 1 and online supplementary table S5).

Whole grain diet did not improve insulin sensitivity but reduced body weight

The intervention did not result in any differential changes in markers of glucose metabolism (HOMA-IR, glycated

haemoglobin (HbA1c), fasting serum C-peptide, fasting glucose and insulin), lipid metabolism (fasting serum concentrations of triacylglycerol, HDL, low-density lipoprotein and total cholesterol and FFA), liver function (alanine aminotransferase (ALT) and aspartate aminotransferase (AST)), satiety (fasting plasma concentrations of leptin, glucagon-like peptide (GLP)-1 and GLP-2) or systolic/diastolic BP (table 2 and online supplementary figure S3). However compared with the refined grain diet, the whole grain diet reduced body weight ($p<0.001$; table 2) and fat-free mass ($p=0.010$) and a tendency for a reduction in fat mass ($p=0.057$) was also observed. In addition, SAD decreased during the whole grain period compared with the refined grain period ($p=0.001$), and a similar tendency was observed for waist circumference ($p=0.097$). Changes in body weight, fat-free mass and SAD correlated with a difference in energy intake between the two periods ($p<0.0001$, $p=0.0052$

Table 2 Effects of diet interventions on body composition, glucose metabolism, lipid metabolism, satiety hormones, blood pressure, liver markers and markers of inflammation in study participants (values are presented as mean \pm SD, n=50)

	Refined grain		Whole grain		p Value*
Variable	Baseline	End	Baseline	End	
Body composition					
Body weight (kg)	86.1±12.6	87.0±13.0	85.4±13.4	85.2±13.1	<0.001
Body fat mass (kg)	29.1±9.2	29.8±9.3	28.8±9.1	28.6±9.5	0.057
Fat-free mass (kg)	57.1±11.5	57.1±11.7	56.3±11.6	55.4±10.4	0.010
Waist circumference (cm)	100.4±8.6	100.8±9.1	100.1±8.4	99.4±9.3	0.097
Sagittal abdominal diameter (cm)	22.9±2.7	23.2±2.9	23.1±2.9	22.7±2.8	0.001
Glucose metabolism					
HOMA-IR	3.2±1.7	3.2±1.8	2.9±1.4	2.9±1.5	0.53
HbA1c (%)	5.4±0.3	5.5±0.3	5.4±0.3	5.4±0.3	0.17
Fasting plasma glucose (mmol/L)†	5.7±0.6	5.7±0.6	5.7±0.5	5.6±0.6	0.15
Fasting serum C-peptide (pmol/L)	820±238	853±273	796±219	790±227	0.18
Fasting serum insulin (pmol/L)†	74.1±35.8	75.8±37.8	66.9±28.9	67.7±31.6	0.36
Lipids					
Fasting serum total cholesterol (mmol/L)	5.4±1.0	5.4±1.0	5.4±0.9	5.2±0.9	0.28
Fasting serum LDL cholesterol (mmol/L)	3.2±0.8	3.1±0.8	3.2±0.7	3.1±0.7	0.38
Fasting serum HDL cholesterol (mmol/L)	1.3±0.2	1.3±0.3	1.3±0.3	1.3±0.3	0.26
Fasting serum triacylglycerol (mmol/L)	1.2±0.6	1.4±0.8	1.2±0.4	1.3±0.7	0.79
Fasting serum FFA (mmol/L)†	0.4±0.1	0.5±0.1	0.5±0.1	0.5±0.2	0.52
Satiety hormones					
Fasting plasma leptin (ng/mL)	49.1±35.6	54.2±54.7	47.7±37.3	45.3±42.3	0.07
Fasting plasma GLP-1 (pmol/L)†	11.2±2.4	11.8±2.5	11.3±2.5	11.3±2.1	0.41
Fasting plasma GLP-2 (pmol/L)†	12.5±6.3	12.4±5.9	11.3±4.1	13.2±10.2	0.36
Blood pressure					
Systolic BP (mm Hg)	124.2±11.8	124.1±12.4	126.2±12.0	124.0±12.6	0.67
Diastolic BP (mm Hg)	79.1±8.0	79.4±9.3	80.1±8.9	79.8±8.9	0.74
Liver markers					
Fasting serum AST (U/L)	20.5±7.0	21.1±8.1	21.6±9.7	20.9±7.6	0.59
Fasting serum ALT (U/L)	21.6±11.5	24.6±16.2	23.8±14.1	23.6±13.6	0.71
Inflammatory markers					
Fasting serum CRP (mg/L)	3.1±2.6	5.0±5.8	6.3±14.0	4.2±6.8	0.003
Fasting serum IL-6 (pg/mL)	1.2±0.7	2.0±2.0	1.6±1.2	1.4±1.1	0.009
Fasting serum IL-1β (n=7) (pg/mL)‡	0.3±0.4	0.6±0.3	0.7±1.2	0.4±0.4	0.008
Fasting serum TNFα (pg/mL)	1.7±0.8	1.7±0.08	1.7±0.9	1.7±0.9	0.87

*Linear mixed model adjusted for gender and age.

†See postprandial measures in online supplementary figure S3.

‡Only detected in seven participants, which explains the large variation.

ALT, alanine aminotransferase; AST, aspartate aminotransferase; BP, blood pressure; CRP, C-reactive protein; FFA, free-fatty acids; GLP, glucagon-like peptide; HbA1c, glycated haemoglobin; HDL, high-density lipoprotein; HOMA-IR, homeostatic model assessment for insulin resistance; IL, interleukin; LDL, low-density lipoprotein; TNF α , tumour necrosis factor alpha.

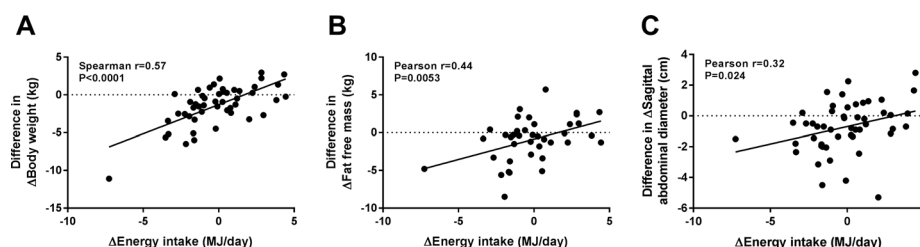


Figure 1 Change in body composition was associated with change in energy intake. The difference in total energy intake between the two interventions (Δ Energy) was associated with changes in (A) Δ Body weight, (B) Δ Fat-free mass and (C) Δ Sagittal abdominal diameter, where Δ refers to change of the given measure during the whole grain period minus the change of the given measure during the refined grain period. Correlations were calculated using Spearman's rank or Pearson's correlation depending on whether the data were normally distributed (n=50).

and $p=0.024$, respectively; [figure 1](#)), suggesting that the reduction in body weight was primarily explained by a lower energy intake. Although plasma leptin was not significantly different between interventions ($p=0.07$), the reductions in body weight and energy intake were both significantly associated with a reduction in plasma leptin (Pearson $r=0.47$, $p<0.0001$ and Pearson $r=0.40$, $p=0.0057$, respectively).

Whole grain diet reduced fasting circulating levels of low-grade inflammatory markers without affecting intestinal permeability

The systemic low-grade inflammatory marker CRP decreased in serum during the whole grain diet compared with the refined grain diet ($p=0.003$; [table 2](#)). Likewise, serum concentrations of the proinflammatory cytokines, IL-6 and IL-1 β decreased ($p=0.009$ and 0.008 , respectively), whereas tumour necrosis factor alpha concentrations remained unchanged. After adjustment for body weight, the reductions in CRP, IL-6 and IL-1 β were still evident ($p=0.004$, $p=0.047$ and $p=0.009$, respectively). The change in serum concentrations of IL-6 was associated with the change in whole grain consumption ($p=0.033$, [figure 2](#)) but not with the change in energy intake. Whereas serum IL-6 concentrations were borderline negatively associated with total plasma alkylresorcinols ($p=0.059$; online supplementary table S6), IL-6 was negatively associated with plasma concentrations of alkylresorcinol homologues C17:0 and C19:0 ($p=0.0003$ and $p=0.027$; [figure 2B](#) and online supplementary table S6), which are the main homologues in rye products (see online supplementary table S1). In addition, IL-6 was negatively associated with

the ratio of plasma alkylresorcinol homologues C17:0-to-C21:0 ($p=0.024$; [figure 2B](#) and online supplementary table S6), which is an estimate of the relative intake of whole grain wheat and rye,³⁸ suggesting that the reduction in IL-6 was mainly associated with rye intake. Changes in CRP were not significantly associated with changes in whole grain consumption, energy intake or plasma alkylresorcinols (see online supplementary table S6). There was no difference in the urinary excretion of lactulose and mannitol nor the lactulose-mannitol ratio between the two diet periods (see online supplementary figure S4A-C). This was further supported by unaltered fasting serum concentrations of zonulin, a suggested biomarker of gut barrier function (see online supplementary figure S4D), indicating that there was no association between the reduction of inflammatory markers and markers of gut permeability.

Metagenomic profiling of faecal microbiota showed no major effects of increased whole grain intake

Relative to the refined grain diet, the whole grain diet did not result in significant changes in the faecal bacterial species diversity or richness of the microbial community ([figure 3A-B](#)). Moreover, no significant changes in the abundance of individual bacterial species, as assessed by shotgun sequencing, were observed after FDR correction for multiple testing ([figure 3C](#) and online supplementary table S7). Among the species, which were responding the most, four distinct strains of *Faecalibacterium prausnitzii* and one *Prevotella copri* increased in abundance after whole grain and decreased in abundance after refined grain consumption, whereas *Bacteroides thetaiotaomicron* changed

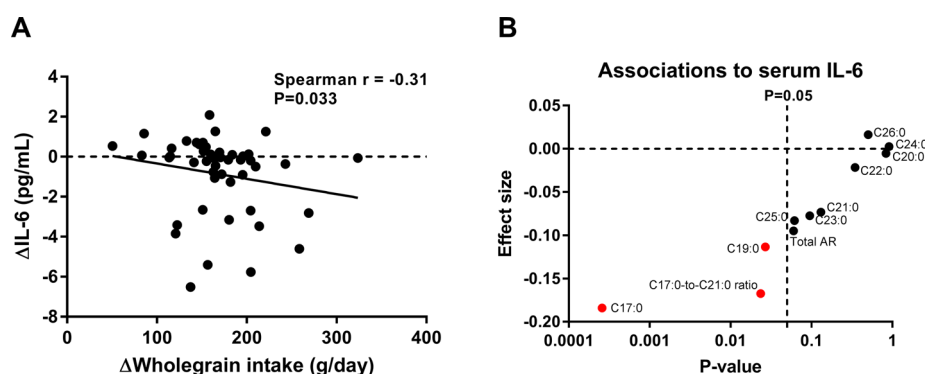


Figure 2 Change in fasting serum concentrations of IL-6 was associated with whole grain intake. (A) Δ IL-6, designating change in serum concentrations during the whole grain period minus the change during the refined grain, was negatively associated with Δ Whole grain intake, designating difference in whole grain intake between the two periods, as calculated by Spearman's rank correlation (n=47). (B) Serum concentrations of IL-6 were negatively associated with plasma AR homologues (biomarkers of whole grain intake) and in particular with the C17:0 homologue ($p=0.0003$) and the ratio of C17:0-to-C21:0 ($p=0.024$), indicating a specific association with intake of whole grain rye, as calculated by linear regression analyses adjusted for age and gender (n=50) (see also online supplementary table S6). AR, alkylresorcinol; IL-6, interleukin 6.

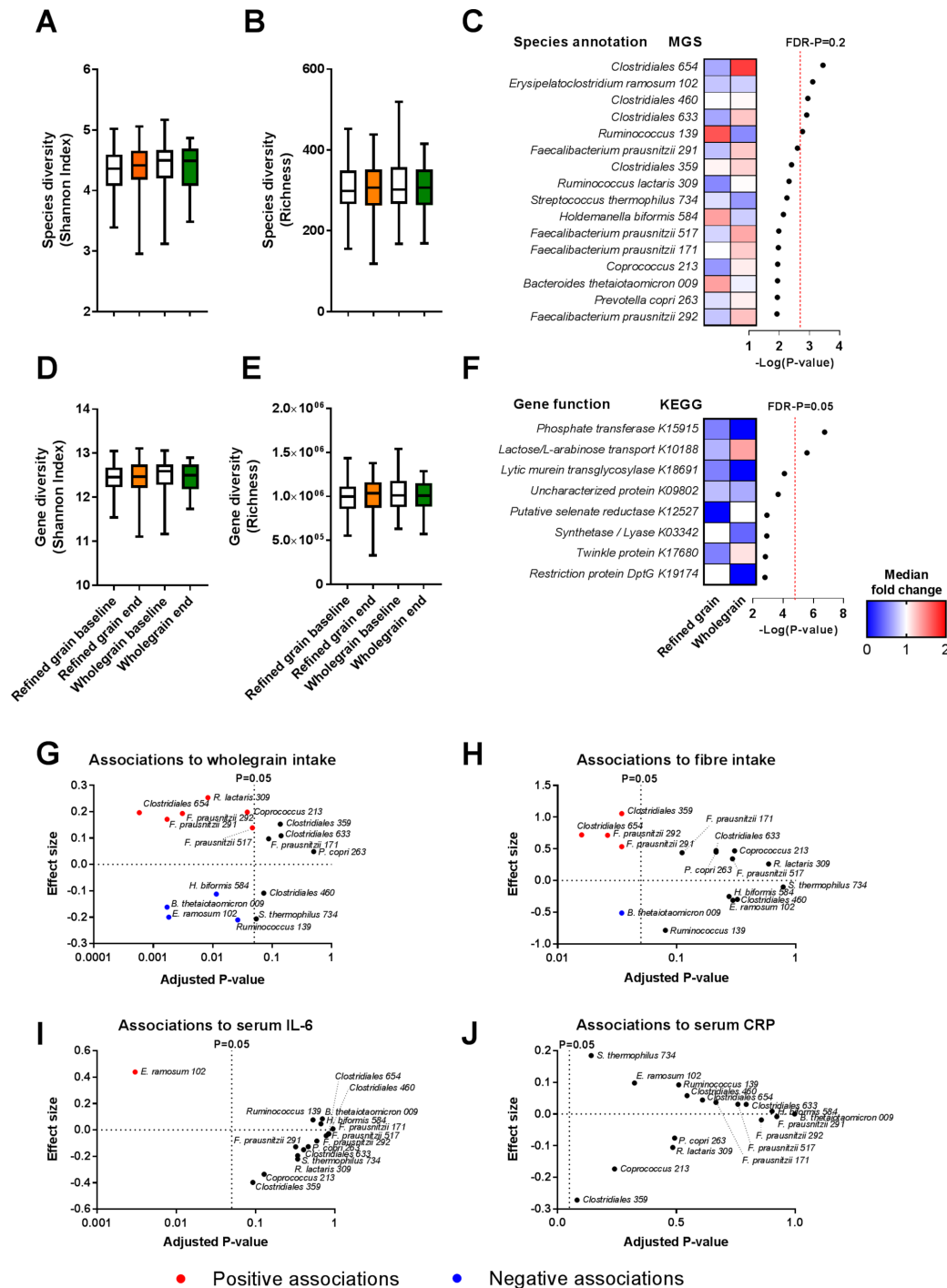


Figure 3 Faecal microbiome composition did not differ between the two diets. (A) The subjects' faecal microbial species diversity assessed by Shannon Index and (B) richness did not significantly differ between the two diets. Shown is the species diversity at baselines (white boxes) and at the end of the refined grain diet (orange boxes) and whole grain diet (green boxes). (C) Heatmap of the median fold changes in relative abundance of the individual MGSs during refined grain and whole grain diet, respectively. No MGSs changed significantly comparing the two periods. Of note, five species differed between diets with a FDR-P below 0.2 (red dotted line). (D) Gene diversity assessed by Shannon Index and (E) richness did not differ significantly between diets. Shown is the gene diversity at baselines (white boxes) and at the end of the refined grain diet (orange boxes) and whole grain diet (green boxes). (F) Heatmap of the median fold changes in relative abundance of the individual gene functions (KOs) during refined grain and whole grain diet, respectively. Two KOs differed significantly between diets with a FDR-P below 0.05 (red dotted line). Changes in microbiome composition were assessed by linear mixed model adjusted for age and gender followed by correction for multiple testing by the Benjamini-Hochberg approach (n=48) (see also online supplementary table S7 and S8). Among the bacterial species responding most to the intervention, several species were associated with (G) whole grain intake and (H) fibre intake, whereas only *Erysipelatoclostridium ramosum* was associated with (I) serum IL-6 concentrations and no species were associated with (J) serum CRP concentrations as assessed by the linear mixed model adjusted for age and gender followed by correction for multiple testing by the Benjamini-Hochberg approach (n=48) (see also online supplementary table S11). CRP, C-reactive protein; FDR-P, false discovery rate corrected p value; KEGG, Kyoto Encyclopaedia of Genes and Genomes; KO, KEGG orthologies; MGS, metagenomic species.

Gut microbiota

in the opposite direction. Microbial gene diversity and richness remained unaffected (figure 3D–E). Two KOs significantly increased during the whole grain period as compared with the refined grain period, namely a lactose/L-arabinose transport system substrate-binding protein (KO K10188) and a glycosyl-1-phosphate transferase (KO K15915) (FDR corrected $p < 0.05$; figure 3F and online supplementary table S8). We specifically tested changes in the abundance of saccharolytic genes,²¹ but no carbohydrate active enzymes were found to differ (see online supplementary table S9). Finally, since butyrate is predominantly synthesised via butyryl-CoA:acetate CoA-transferase genes,³⁹ we specifically tested whether the abundance of any acetate CoA-transferase genes was significantly changed. However, this was not the case. In line with the shotgun metagenomics results, 16S rRNA gene sequencing did not reveal any significant differences in the faecal microbiota between the two dietary interventions (see online supplementary table S10). Among the most responding species mentioned above, several strains of *Clostridiales* and *F. prausnitzii* were positively associated with whole grain and fibre intake, whereas *B. thetaiotaomicron* was negatively associated with whole grain and fibre intake (FDR-corrected $p < 0.05$; figure 3G–H and supplementary table S11), suggesting that these bacterial species were affected by the intervention. Only *Erysipelatoclostridium ramosum* was associated with serum IL-6 concentrations, however not with serum CRP concentrations (FDR-corrected $p < 0.05$; figure 3I–J and supplementary table S11).

Colonic fermentation was unaffected by diet, but whole grain-derived metabolites changed in urine

Although enhanced whole grain consumption had only subtle effects on the faecal bacterial composition and genomically inferred bacterial activity, we investigated whether intestinal gas production, intestinal transit time and bacterially derived metabolites changed in response to increased whole grain intake. Neither fasting nor postprandial breath hydrogen excretion differed between the intervention periods (see online supplementary figure S5). Unaltered basal colonic bacterial fermentation was supported by an observed unaltered intestinal transit time (see online supplementary figure S6) and a non-detectable change in fasting plasma SCFA concentrations (see online supplementary table S12). However, we noted that a comparison of the treatment groups at end of the periods indicated higher plasma concentrations of butyrate after the whole grain intervention as compared with the refined grain interventions (paired t-test; $p = 0.022$). Untargeted metabolic profiling of urine showed five urinary metabolites that increased during the whole grain period compared with the refined grain period (FDR-corrected $p < 0.05$;

table 3; see online supplementary table S13). Four of these were identified as urinary biomarkers of whole grain intake and included the whole grain derived alkylresorcinol 3-(3,5-dihydroxyphenyl)-1-propanoic acid-glucuronide (DHPPA-glucuronide),⁴⁰ 2-aminophenol-sulfate, a microbial degradation product of benzoxazinoids found in wheat and rye⁴¹ and the phenolic metabolites, pyrocatechol-sulfate and pyrocatechol-glucuronide produced by the gut microbiota from dietary phenolic compounds.⁴² All of these metabolites were positively correlated with whole grain intake ($p < 0.001$; table 3), suggesting changes in these whole grain-derived metabolites in the systemic circulation. In addition, linear regression analyses showed that urinary concentrations of DHPPA-glucuronide was negatively associated with serum concentrations of both IL-6 and CRP ($p = 0.002$ and $p = 0.032$, respectively (see online supplementary table S14), and urinary concentrations of pyrocatechol-glucuronide and 2-aminophenol-sulfate were negatively associated with CRP ($p = 0.023$ and $p = 0.018$, respectively; see online supplementary table S14), substantiating the association between whole grain intake and serum concentrations of inflammatory markers. In contrast, urinary concentrations of the fifth metabolite, putatively identified as 3-methyladipic acid, did not correlate with whole grain intake, however, a linear regression analysis showed that it was negatively associated with body weight ($p < 0.0001$).

DISCUSSION

By a randomised, controlled cross-over trial comprising two 8-week dietary intervention periods in subjects exhibiting an increased metabolic risk profile, we demonstrated that a whole grain diet, as compared with a refined grain diet, reduced body weight and markers of low-grade systemic inflammation without significantly changing the faecal microbial composition, diversity or functional potential. Importantly, the observed effect of whole grain on inflammation markers was still evident after adjustment for weight loss. The effects on inflammation and body weight were the net result of the refined grain diet increasing weight and inflammatory markers and the whole grain diet reducing these parameters. However, we found no changes in glucose and lipid metabolism, markers for liver fibrosis, metabolic satiety-regulating hormones or BP after 8 weeks of enhanced whole grain intake as compared with refined grain intake.

Our results add to a growing body of literature demonstrating the ability of whole grain consumption to reduce low-grade systemic inflammation⁴³ and body weight.⁴⁴ Here, we found that the reduction in body weight was directly associated with the reduction in energy intake, suggesting that whole grain products, compared with refined grain products, induce satiation at

Table 3 Urine metabolites changing with intake of whole grain compared with refined grain (values are median (25%–75%) of fold changes calculated as the relative abundance at endpoint divided by the relative abundance at baseline, n=48)

Metabolite	Method	Refined grain fold change	Whole grain fold change	FDR-corrected p value*	Correlation to whole grain intake†	
					Rho	p Value
DHPPA-glucuronide	UPLC-MS	0.67 (0.41–0.87)	1.48 (0.93–2.30)	<0.0001	0.69	<0.0001
2-aminophenol-sulfate	UPLC-MS	0.83 (0.46–1.39)	1.92 (0.81–3.53)	0.003	0.51	<0.0001
Pyrocatechol-glucuronide	UPLC-MS	0.88 (0.60–1.32)	1.57 (0.87–2.23)	0.007	0.33	<0.001
Pyrocatechol-sulfate	UPLC-MS	1.01 (0.74–1.54)	1.64 (0.94–2.16)	0.036	0.37	<0.001
3-methyladipic acid	GC-MS	0.76 (0.54–0.97)	1.11 (0.87–1.34)	0.004	0.20	0.053

See online supplementary table S13 for identification details.

*Linear mixed model adjusted for age and gender followed by correction for multiple testing by the Benjamini-Hochberg approach.

†Spearman's Rank correlation between metabolites and whole grain intake.

DHPPA, 3-(3,5-dihydroxyphenyl)-1-propanoic acid; GC-MS, gas chromatography mass spectrometry; UPLC-MS, ultra-performance liquid chromatography mass spectrometry.

a lower energy intake level. This is in line with a recent study, suggesting that whole grain-induced weight loss is mediated by a lower energy intake.⁴⁵

Noteworthy, the reduction in fasting serum concentrations of the proinflammatory cytokine IL-6 was directly related to change in whole grain intake and in particular to rye intake as suggested by the associations between IL-6 and plasma concentrations of alkylresorcinol C17:0, an alkylresorcinol homologue predominantly coming from rye products. The association between the reduction in inflammatory markers and whole grain consumption was substantiated by several urinary biomarkers of whole grain showing negative correlations to serum CRP and IL-6.

Notably, the baseline values for the inflammatory markers prior to the whole grain and refined grain interventions, respectively, were not the same. Keeping in mind the cross-over design of our study, which means that half of the baseline measurements before the whole grain intervention come from individuals who have previously undergone the refined grain intervention and vice versa, the differences between the two baselines can be explained by carry-over effects pulling in two opposite directions. However, such effects were taken into account by the applied linear mixed model which adjusts for carry-over and period effects.

Whereas other intervention studies have showed a reduction in circulating concentrations of CRP,^{44 46 47} only one study, which lacked a control group, has to our knowledge revealed a significant reduction of IL-6 following a whole grain diet that included whole grain barley and brown rice.⁴⁸

Studies in mice have suggested that non-digestible fibres reduce systemic low-grade inflammation by changing the gut permeability.⁴⁹ However, whole grain intake did not affect gut permeability in the present study. Instead, the associations between biomarkers of whole grain and proinflammatory markers suggest that changes in circulating levels of whole grain derived phytochemicals, in particular of rye, may be key to the health-promoting effects.

The gut microbiota has also been suggested to act as a mediator of whole grain-induced improvements on low-grade systemic inflammation and increased satiety^{48 50} via production of SCFA and other bioactive compounds.⁸ However, only a few observations in our study pointed towards an effect of whole grain on the gut microbiota composition. Consistent with increased levels of arabinose in the whole grain diet, we found a significant enrichment in genes involved in the bacterial lactose/L-arabinose transport system substrate-binding proteins in response to the whole grain diet as compared with the refined grain diet. Furthermore, we found increased urinary concentrations of whole grain-derived microbial metabolites, suggesting subtle whole grain-induced effects on the gut microbial metabolism.

Although it has been reported that a sudden switch between plant-based and meat-based diets rapidly changes the composition and function of the microbiota,⁵¹ other studies have demonstrated absence of whole grain-induced changes of gut microbiota composition in both high-habitual and low-habitual whole grain consumers.^{14 15 19 52} While the design of previous studies may have impaired the ability to detect effects of interventions that did not imply significant changes from the habitual diet of some individuals, our present design, comparing a whole grain intervention directly to a refined grain intervention, must be expected to compensate for this problem. In contrast to previous studies, which typically involved sequencing only of bacterial 16S rRNA gene regions, here we applied both deep metagenomic (shotgun) sequencing and 16S rRNA amplicon

profiling allowing us to analyse the microbiome response at both species and functional levels. Yet, we identified only subtle responses to the intervention. None of the most intervention-responsive bacterial species remained significantly changed after adjusting for multiple testing, however, it should be noted that in line with our observations, a whole grain-induced increase in *F. prausnitzii*, *P. copri* and *Clostridiales* has been observed also in other studies examining the effects of dietary fibres on the gut microbiota.^{53 54} The associations between whole grain intake and strains of *F. prausnitzii* and *Clostridiales* and the inverse association between whole grain intake and *B. thetaiotaomicron* suggest that these bacteria were indeed responding to the dietary intervention. Dietary fibre-induced blooming of the butyrate-producing *F. prausnitzii* at the expense of *Bacteroides* has previously been shown in vitro as a result of a drop in pH.⁵⁵ However, here we did not observe any differences in plasma SCFAs or intestinal transit time to suggest a changed colonic pH.⁵⁶ Among the most responding species, *E. ramosum* was associated with serum IL-6 concentrations. This species has been reported to promote obesity in mice fed a high fat diet⁵⁷ and to be abundant in individuals with low microbiome gene count and high plasma concentrations of CRP,⁵⁸ suggesting that a whole grain-induced reduction of *E. ramosum* may have contributed to the observed reduction in weight and IL-6.

The limited effects of whole grains on the gut microbiota in clinical trials may reflect that whole grains as a food group recommended as part of a healthy diet have been diffusely defined and may have included different cereals such as wheat, rye and oat, which may exert very different effects on the individual gut microbes. Therefore, future studies should rather focus on examining the effect of specific grains.

In summary, we found that a whole grain diet as compared with a refined grain diet reduced energy intake and body weight and the low-grade systemic inflammation markers CRP and IL-6, without significantly altering whole body insulin sensitivity, gut microbiome or gut functionality in terms of intestinal integrity and transit time. Thus, in contrast to our hypothesis, the health benefits of this specific diet rich in whole grains appeared to be independent of changes in the gut microbiome composition within an 8-week diet study.

Author affiliations

¹National Food Institute, Technical University of Denmark, Kongens Lyngby, Denmark

²Department of Bio and Health Informatics, Technical University of Denmark, Kongens Lyngby, Denmark

³Department of Nutrition, Exercise and Sports, Faculty of Science, University of Copenhagen, Copenhagen, Frederiksberg, Denmark

⁴Department of Veterinary Disease Biology, Faculty of Science, University of Copenhagen, Copenhagen, Frederiksberg, Denmark

⁵Department of Biology and Biological Engineering, Chalmers University of Technology, Göteborg, Sweden

⁶The Novo Nordisk Foundation Center for Basic Metabolic Research, University of Copenhagen, Copenhagen, Denmark

⁷Department of Biotechnology and Biomedicine, Technical University of Denmark, Kongens Lyngby, Denmark

⁸Department of Chemical and Biochemical Engineering, Technical University of Denmark, Kongens Lyngby, Denmark

⁹Department of Radiology, Bispebjerg Hospital, Copenhagen, Denmark

¹⁰Department of Biomedical Sciences, University of Copenhagen, Copenhagen, Denmark

¹¹Research Unit and Department of Gastroenterology, Herlev and Gentofte Hospital, Copenhagen, Denmark

¹²Research Centre for Prevention and Health, Copenhagen, Denmark

¹³Department of Clinical Experimental Research, Rigshospitalet, Copenhagen, Denmark

¹⁴Department of Clinical Medicine, Faculty of Health and Medical Sciences, University of Copenhagen, Copenhagen, Denmark

¹⁵Department of Plant and Environmental Sciences, University of Copenhagen, Frederiksberg, Denmark

Gut microbiota

¹⁶School of Biological Sciences, The University of Auckland, Auckland, New Zealand

¹⁷Laboratory of Genomics and Molecular Biomedicine, Department of Biology, University of Copenhagen, Copenhagen, Denmark

¹⁸Steno Diabetes Center Copenhagen, Gentofte, Denmark

¹⁹Biostatistics, Department of Public Health, University of Copenhagen, Copenhagen, Denmark

²⁰Clinical-Microbiomics A/S, Copenhagen, Denmark

Acknowledgements We dedicate this paper to the memory of our friend, colleague and collaborator, Lasse Ingvar Hellgren, who stayed a committed member of the scientific committee of the 3G centre until he passed away in June 2017. The authors thank Axel Kornerup (University of Copenhagen) who has participated in many good discussions as a member of the scientific committee, as well as Sarah Ben Soltane, Charlotte Holm Brodersen, Pernille Lærke Bjørndal Hollænder and Anne Marie Raabyemagle (University of Copenhagen) for their help with the human intervention trial and analysis of blood samples, Kate V. Vibefelt (Technical University of Denmark) for DNA extraction, Neslihan Bicen (Technical University of Denmark) for PCR and sequencing and Morgan Han and Elizabeth McKenzie (The University of Auckland) for excellent technical support on GC-MS analyses. Sequencing was carried out by the Technical University of Denmark in-house facility (DTU Multi-Assay Core, DMAC), in collaboration with BGI Copenhagen. We also gratefully acknowledge the Danish National Supercomputer for Life Sciences—Computerome (computerome.dtu.dk) for the computational resources to perform the sequence analyses. The Novo Nordisk Foundation Center for Basic Metabolic Research is an independent research centre at the University of Copenhagen and is partly funded by an unrestricted donation from the Novo Nordisk Foundation.

Contributors Conception and design of the study: MK, LL, MIB, HF, RG, KK, HV, TH, OP, TRL; collection of data and biological samples: MK, SI, RG, MVL, RBM, LL; analysis of markers of host physiology: RBM, HF, LL, MVL, SB, JH; faecal microbiota: JKV, LBSH, RLN, MIB, MDD, VC, HBN, RG; plasma short-chain fatty acids: RL; plasma alkylresorcinols: MVL, ABR; urine metabolome: HMR, HLF, SVB; intestinal transit time: MHS, AFC; lactulose-mannitol excretion: ABR; study products: MK, SI, MVL, JH, ASM, AB; data analysis and interpretation: HMR, JKV, MK, LBSH, MVL, RBM, MIB, RLN, HF, CTE, CR, HBN, RG, LL, TLR; manuscript drafting: HMR, JKV, MK, MIB, LL and TLR. All authors read, revised and approved the final manuscript.

Funding This study was supported by the Innovation Fund Denmark (grant no. 11-116163/0603-00487B; Center for Gut, Grain and Greens (3G Center)). RLN was supported by a grant from DTU and the Sino-Danish Center for Education and Research.

Competing interests MV Lind was partly supported by an unrestricted grant from Cereal Partners Worldwide, a joint venture between Nestlé SA and General Mills Ltd. There were no conflict of interest to declare for the other authors. Intervention products were sponsored by Kohberg, Lantmännen, AXA, Wasa, Urtekram, Finax and Doves Farm. Sponsors of grants and products played no role in the design, methods, data management and analysis nor in the decision to publish.

Ethics approval Municipal Ethical Committee of the Capital Region of Denmark.

Provenance and peer review Not commissioned; externally peer reviewed.

Open Access This is an Open Access article distributed in accordance with the Creative Commons Attribution Non Commercial (CC BY-NC 4.0) license, which permits others to distribute, remix, adapt, build upon this work non-commercially, and license their derivative works on different terms, provided the original work is properly cited and the use is non-commercial. See: <http://creativecommons.org/licenses/by-nc/4.0/>

© Article author(s) (or their employer(s) unless otherwise stated in the text of the article) 2017. All rights reserved. No commercial use is permitted unless otherwise expressly granted.

REFERENCES

- Tang G, Wang D, Long J, *et al.* Meta-analysis of the association between whole grain intake and coronary heart disease risk. *Am J Cardiol* 2015;115:625–9.
- Lutsey PL, Jacobs DR, Kori S, *et al.* Whole grain intake and its cross-sectional association with obesity, insulin resistance, inflammation, diabetes and subclinical CVD: the MESA Study. *Br J Nutr* 2007;98:397–405.
- Hartvigsen ML, Lærke HN, Overgaard A, *et al.* Postprandial effects of test meals including concentrated arabinoxylan and whole grain rye in subjects with the metabolic syndrome: a randomised study. *Eur J Clin Nutr* 2014;68:567–74.
- Pol K, Christensen R, Bartels EM, *et al.* Whole grain and body weight changes in apparently healthy adults: a systematic review and meta-analysis of randomized controlled studies. *Am J Clin Nutr* 2013;98:872–84.
- Magnusdottir OK, Landberg R, Gunnarsdottir I, *et al.* Whole grain rye intake, reflected by a biomarker, is associated with favorable blood lipid outcomes in subjects with the metabolic syndrome—a randomized study. *PLoS One* 2014;9:e110827.
- Montonen J, Boeing H, Fritsche A, *et al.* Consumption of red meat and whole-grain bread in relation to biomarkers of obesity, inflammation, glucose metabolism and oxidative stress. *Eur J Nutr* 2013;52:337–45.
- Walter J, Martínez I, Rose DJ. Holobiont nutrition: considering the role of the gastrointestinal microbiota in the health benefits of whole grains. *Gut Microbes* 2013;4:340–6.
- Fardet A. New hypotheses for the health-protective mechanisms of whole-grain cereals: what is beyond fibre? *Nutr Res Rev* 2010;23:65–134.
- Wichmann A, Allahyar A, Greiner TU, *et al.* Microbial modulation of energy availability in the colon regulates intestinal transit. *Cell Host Microbe* 2013;14:582–90.
- Hong YH, Nishimura Y, Hishikawa D, *et al.* Acetate and propionate short chain fatty acids stimulate adipogenesis via GPCR43. *Endocrinology* 2005;146:5092–9.
- Priebe MG, Wang H, Weening D, *et al.* Factors related to colonic fermentation of nondigestible carbohydrates of a previous evening meal increase tissue glucose uptake and moderate glucose-associated inflammation. *Am J Clin Nutr* 2010;91:90–7.
- Furusawa Y, Obata Y, Fukuda S, *et al.* Commensal microbe-derived butyrate induces the differentiation of colonic regulatory T cells. *Nature* 2013;504:446–50.
- Suzuki T, Yoshida S, Hara H. Physiological concentrations of short-chain fatty acids immediately suppress colonic epithelial permeability. *Br J Nutr* 2008;100:297–305.
- Amptzoglou A, Atwal KK, Maidens CM, *et al.* Increased whole grain consumption does not affect blood biochemistry, body composition, or gut microbiology in healthy, low-habitual whole grain consumers. *J Nutr* 2015;145:215–21.
- Lappi J, Salojärvi J, Kolehmainen M, *et al.* Intake of whole-grain and fiber-rich rye bread versus refined wheat bread does not differentiate intestinal microbiota composition in Finnish adults with metabolic syndrome. *J Nutr* 2013;143:648–55.
- Walker AW, Ince J, Duncan SH, *et al.* Dominant and diet-responsive groups of bacteria within the human colonic microbiota. *Isme J* 2011;5:220–30.
- Costabile A, Klinder A, Fava F, *et al.* Whole-grain wheat breakfast cereal has a prebiotic effect on the human gut microbiota: a double-blind, placebo-controlled, crossover study. *Br J Nutr* 2008;99:110–20.
- Martínez I, Wallace G, Zhang C, *et al.* Diet-induced metabolic improvements in a hamster model of hypercholesterolemia are strongly linked to alterations of the gut microbiota. *Appl Environ Microbiol* 2009;75:4175–84.
- Vanegas SM, Meydani M, Barnett JB, *et al.* Substituting whole grains for refined grains in a 6-wk randomized trial has a modest effect on gut microbiota and immune and inflammatory markers of healthy adults. *Am J Clin Nutr* 2017.
- Zeevi D, Korem T, Zmora N, *et al.* Personalized nutrition by prediction of glycemic responses. *Cell* 2015;163:1079–94.
- Ibrügger S, Göbel RJ, Vestergaard H, *et al.* Two randomized cross-over trials assessing the impact of dietary gluten or wholegrain on the gut microbiome and host metabolic health. *J Clin Trials* 2014;04.
- van der Kamp JW, Poutanen K, Seal CJ, *et al.* The HEALTHGRAIN definition of 'whole grain'. *Food Nutr Res* 2014;58:22100.
- Ross AB. Present status and perspectives on the use of alkylresorcinols as biomarkers of wholegrain wheat and rye intake. *J Nutr Metab* 2012;2012:1–12.
- Biltoft-Jensen A, Matthiessen J, Rasmussen LB, *et al.* Validation of the Danish 7-day pre-coded food diary among adults: energy intake v. energy expenditure and recording length. *Br J Nutr* 2009;102:1838–46.
- Qi Y, Goel R, Kim S, *et al.* Intestinal permeability biomarker zonulin is elevated in healthy aging. *J Am Med Dir Assoc* 2017;18:810.e1–810.e4.
- Wesolowska-Andersen A, Bahl MI, Carvalho V, *et al.* Choice of bacterial DNA extraction method from fecal material influences community structure as evaluated by metagenomic analysis. *Microbiome* 2014;2:19.
- Godon JJ, Zumstein E, Dabert P, *et al.* Molecular microbial diversity of an anaerobic digester as determined by small-subunit rDNA sequence analysis. *Appl Environ Microbiol* 1997;63:2802–13.
- Roager HM, Hansen LB, Bahl MI, *et al.* Colonic transit time is related to bacterial metabolism and mucosal turnover in the gut. *Nat Microbiol* 2016;1:16093.
- Li J, Jia H, Cai X, *et al.* An integrated catalog of reference genes in the human gut microbiome. *Nat Biotechnol* 2014;32:834–41.
- Nielsen HB, Almeida M, Juncker AS, *et al.* Identification and assembly of genomes and genetic elements in complex metagenomic samples without using reference genomes. *Nat Biotechnol* 2014;32:822–8.
- Nordahl Petersen T, Rasmussen S, Hasman H, *et al.* Meta-genomic analysis of toilet waste from long distance flights; a step towards global surveillance of infectious diseases and antimicrobial resistance. *Sci Rep* 2015;5:11444.
- Lombard V, Golaconda Ramulu H, Drula E, *et al.* The carbohydrate-active enzymes database (CAZY) in 2013. *Nucleic Acids Res* 2014;42:D490–D495.
- Kanehisa M, Sato Y, Kawashima M, *et al.* KEGG as a reference resource for gene and protein annotation. *Nucleic Acids Res* 2016;44:D457–D462.
- Smart KF, Aggio RB, Van Houtte JR, *et al.* Analytical platform for metabolome analysis of microbial cells using methyl chloroformate derivatization followed by gas chromatography-mass spectrometry. *Nat Protoc* 2010;5:1709–29.
- Sumner LW, Amberg A, Barrett D, *et al.* Proposed minimum reporting standards for chemical analysis Chemical Analysis Working Group (CAWG) Metabolomics Standards Initiative (MSI). *Metabolomics* 2007;3:211–21.

- 36 Fitzmaurice GM, Laird NM, Ware JH. *Applied Longitudinal Analysis*. 2nd edn: John Wiley & Sons, Inc, 2011.
- 37 Benjamini Y, Hochberg Y. Controlling the false discovery rate—a practical and powerful approach to multiple testing. *J R Stat Soc Ser B-Methodological* 1995;57:289–300.
- 38 Chen Y, Ross AB, Aman P, *et al*. Alkylresorcinols as markers of whole grain wheat and rye in cereal products. *J Agric Food Chem* 2004;52:8242–6.
- 39 Duncan SH, Barcenilla A, Stewart CS, *et al*. Acetate utilization and butyryl coenzyme A (CoA):acetate-CoA transferase in butyrate-producing bacteria from the human large intestine. *Appl Environ Microbiol* 2002;68:5186–90.
- 40 Landberg R, Aman P, Friberg LE, *et al*. Dose response of whole-grain biomarkers: alkylresorcinols in human plasma and their metabolites in urine in relation to intake. *Am J Clin Nutr* 2009;89:290–6.
- 41 Hanhineva K, Rogachev I, Aura AM, *et al*. Qualitative characterization of benzoxazinoid derivatives in whole grain rye and wheat by LC-MS metabolite profiling. *J Agric Food Chem* 2011;59:921–7.
- 42 Stalmach A, Edwards CA, Wightman JD, *et al*. Colonic catabolism of dietary phenolic and polyphenolic compounds from Concord grape juice. *Food Funct* 2013;4:52–62.
- 43 Buyken AE, Goletzke J, Joslowski G, *et al*. Association between carbohydrate quality and inflammatory markers: systematic review of observational and interventional studies. *Am J Clin Nutr* 2014;99:813–33.
- 44 Katcher HI, Legro RS, Kunselman AR, *et al*. The effects of a whole grain-enriched hypocaloric diet on cardiovascular disease risk factors in men and women with metabolic syndrome. *Am J Clin Nutr* 2008;87:79–90.
- 45 Suhr J, Vuholm S, Iversen KN, *et al*. Wholegrain rye, but not wholegrain wheat, lowers body weight and fat mass compared with refined wheat: a 6-week randomized study. *Eur J Clin Nutr* 2017;71:959–67.
- 46 Hajhashemi P, Azadbakht L, Hashemipour M, *et al*. Whole-grain intake favorably affects markers of systemic inflammation in obese children: a randomized controlled crossover clinical trial. *Mol Nutr Food Res* 2014;58:1301–8.
- 47 de Mello VD, Schwab U, Kolehmainen M, *et al*. A diet high in fatty fish, bilberries and wholegrain products improves markers of endothelial function and inflammation in individuals with impaired glucose metabolism in a randomised controlled trial: the Sysdimet study. *Diabetologia* 2011;54:2755–67.
- 48 Martinez I, Lattimer JM, Hubach KL, *et al*. Gut microbiome composition is linked to whole grain-induced immunological improvements. *Isme J* 2013;7:269–80.
- 49 Cani PD, Possemiers S, Van de Wiele T, *et al*. Changes in gut microbiota control inflammation in obese mice through a mechanism involving GLP-2-driven improvement of gut permeability. *Gut* 2009;58:1091–103.
- 50 Cooper DN, Martin RJ, Keim NL. Does whole grain consumption alter gut microbiota and satiety? *Healthcare* 2015;3:364–92.
- 51 David LA, Maurice CF, Carmody RN, *et al*. Diet rapidly and reproducibly alters the human gut microbiome. *Nature* 2014;505.
- 52 Vitaglione P, Mennella I, Ferracane R, *et al*. Whole-grain wheat consumption reduces inflammation in a randomized controlled trial on overweight and obese subjects with unhealthy dietary and lifestyle behaviors: role of polyphenols bound to cereal dietary fiber. *Am J Clin Nutr* 2015;101:251–61.
- 53 Kovatcheva-Datchary P, Nilsson A, Akrami R, *et al*. Dietary fiber-induced improvement in glucose metabolism is associated with increased abundance of prevotella. *Cell Metab* 2015;22:971–82.
- 54 Ramirez-Farias C, Slezak K, Fuller Z, *et al*. Effect of inulin on the human gut microbiota: stimulation of bifidobacterium adolescentis and faecalibacterium prausnitzii. *Br J Nutr* 2009;101:533–50.
- 55 Chung WS, Walker AW, Louis P, *et al*. Modulation of the human gut microbiota by dietary fibres occurs at the species level. *BMC Biol* 2016;14:3.
- 56 Lewis SJ, Heaton KW. Increasing butyrate concentration in the distal colon by accelerating intestinal transit. *Gut* 1997;41:245–51.
- 57 Woting A, Pfeiffer N, Loh G, *et al*. Clostridium ramosum promotes high-fat diet-induced obesity in gnotobiotic mouse models. *MBio* 2014;5:e01530-14–10.
- 58 Le Chatelier E, Nielsen T, Qin J, *et al*. Richness of human gut microbiome correlates with metabolic markers. *Nature* 2013;500:541–6.



Whole grain-rich diet reduces body weight and systemic low-grade inflammation without inducing major changes of the gut microbiome: a randomised cross-over trial

Henrik Munch Roager, Josef K Vogt, Mette Kristensen, Lea Benedicte S Hansen, Sabine Ibrügger, Rasmus B Mærkedahl, Martin Iain Bahl, Mads Vendelbo Lind, Rikke L Nielsen, Hanne Frøkiær, Rikke Juul Gøbel, Rikard Landberg, Alastair B Ross, Susanne Brix, Jesper Holck, Anne S Meyer, Morten H Sparholt, Anders F Christensen, Vera Carvalho, Jens Juul Holst, Jüri Johannes Rumessen, Allan Linneberg, Thomas Sicheritz-Pontén, Marlene D Dalgaard, Andreas Blennow, Henrik Lauritz Frandsen, Silas Villas-Bôas, Karsten Kristiansen, Henrik Vestergaard, Torben Hansen, Claus T Ekstrøm, Christian Ritz, Henrik Bjørn Nielsen, Oluf Borbye Pedersen, Ramneek Gupta, Lotte Lauritzen and Tine Rask Licht

Gut published online November 1, 2017

Updated information and services can be found at:
<http://gut.bmj.com/content/early/2017/10/27/gutjnl-2017-314786>

These include:

References

This article cites 54 articles, 14 of which you can access for free at:
<http://gut.bmj.com/content/early/2017/10/27/gutjnl-2017-314786#BIBL>

Open Access

This is an Open Access article distributed in accordance with the Creative Commons Attribution Non Commercial (CC BY-NC 4.0) license, which permits others to distribute, remix, adapt, build upon this work non-commercially, and license their derivative works on different terms, provided the original work is properly cited and the use is non-commercial. See: <http://creativecommons.org/licenses/by-nc/4.0/>

Email alerting service

Receive free email alerts when new articles cite this article. Sign up in the box at the top right corner of the online article.

Topic Collections

Articles on similar topics can be found in the following collections
[Open access](#) (393)

Notes

To request permissions go to:
<http://group.bmj.com/group/rights-licensing/permissions>

To order reprints go to:
<http://journals.bmj.com/cgi/reprintform>

To subscribe to BMJ go to:
<http://group.bmj.com/subscribe/>